



**Buzzards Bay Project**  
*National Estuary Program*

**Memorandum**

TO: Korrin N. Petersen, Esq. CBB Vice President of Advocacy  
FROM: Joseph E. Costa, Executive Director  
Buzzards Bay Project National Estuary Program  
DATE: August 2, 2010  
RE: Estimates of planned sewerage in the Wareham River estuary

You requested the BBNEP's best estimate of the number of septic systems that the town of Wareham will connect to the sewer system in the next few years. In Table 1, we provide such an estimate based on a summary of units in the 11 priority areas identified by the town. These estimates were based on maps in the town of Wareham 2002 and 2006 updates (Figure 1) and recent conversations with the sewer department. A map of existing sewerage areas, and the planned sewerage areas are illustrated in Figure 2.

Please note that only six of the eleven priority areas listed below are in the Wareham River estuary (note asterisks). In addition, only about 75% of the units in the Cromeset Park area are actually within the Wareham River watershed (Figure 2). We have confirmed the town estimates based on our GIS analysis for the watershed (second column). The actual numbers to be sewerage depend on various factors, but you should use the current town estimates for planned sewerage. Based on the town estimates, plus our GIS estimates for the Cromeset park area (bold values in Table 1), our current best estimate is that 720 units will be sewerage in the Wareham River estuary watershed in the next few years. It is worth noting that although the town laid sewer pipe in part of the Wareham River estuary watershed, the town has not yet connected septic systems to the municipal wastewater collection system in those areas.

Table 1. Town and BBNEP GIS estimates of units expected to be sewerage.

Priority site areas (*=principally in WRE watershed)	CWMP/	
	Town estimates	GIS WRE shed Units
Rose Point	236	0
Beaver Dam Estates	44	0
Weweantic Shores	234	0
Parkwood Beach*	<b>331</b>	341
Oakdale*	<b>148</b>	164
Cromeset Park* (portion)	124	<b>93</b>
Mayflower Ridge*	<b>47</b>	48
Briarwood Beach	140	0
Linwood and Ladd Ave*	<b>30</b>	38
Agawam Beach	106	0
Tempest Knob*	<b>71</b>	72
TOTALS	1,511	756



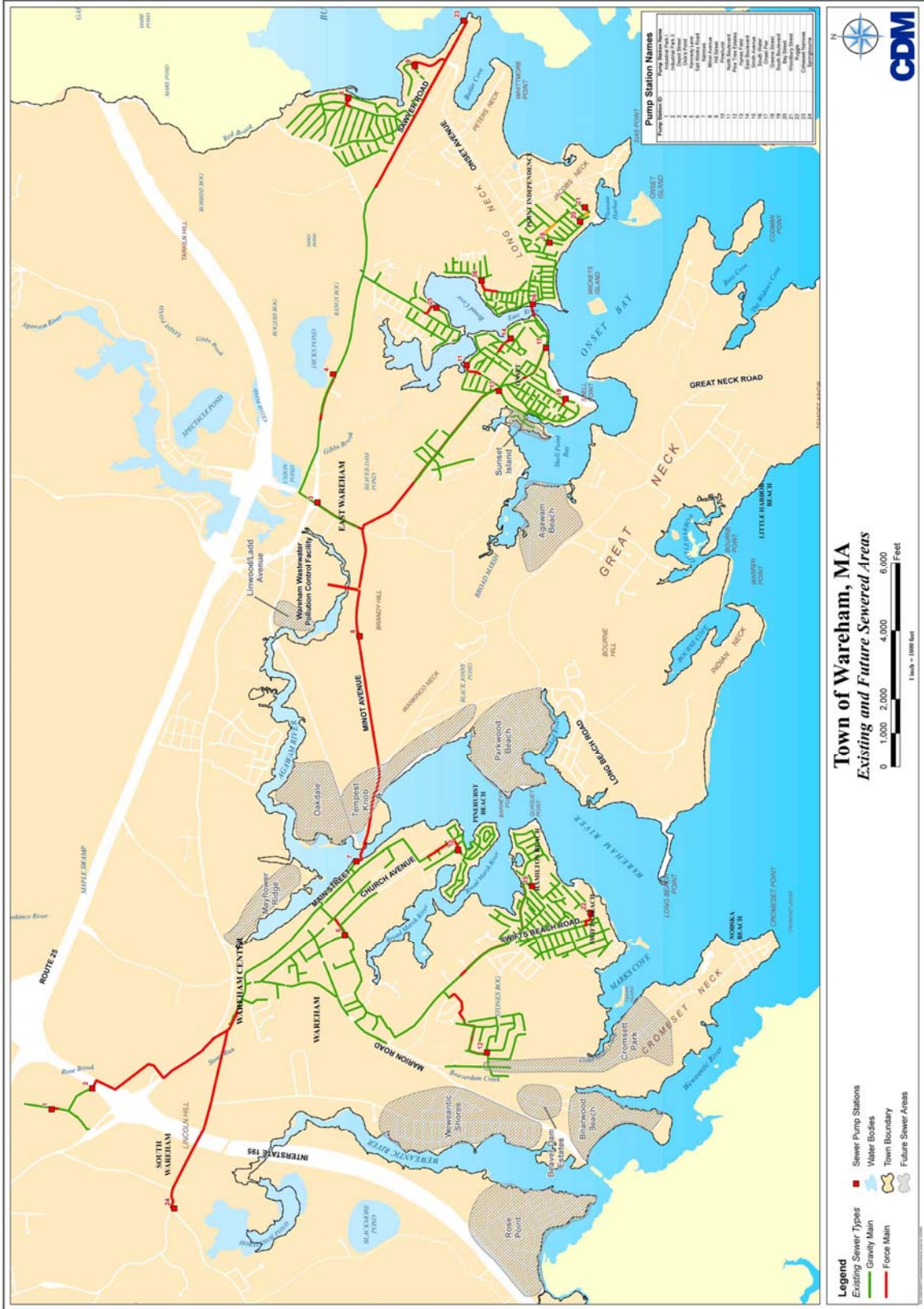


Figure 1. Figure from Town of Wareham 2002 Comprehensive Wastewater Management Plan /Single Environmental Impact Report, as updated in 2006 by Camp Dresser and McKee.



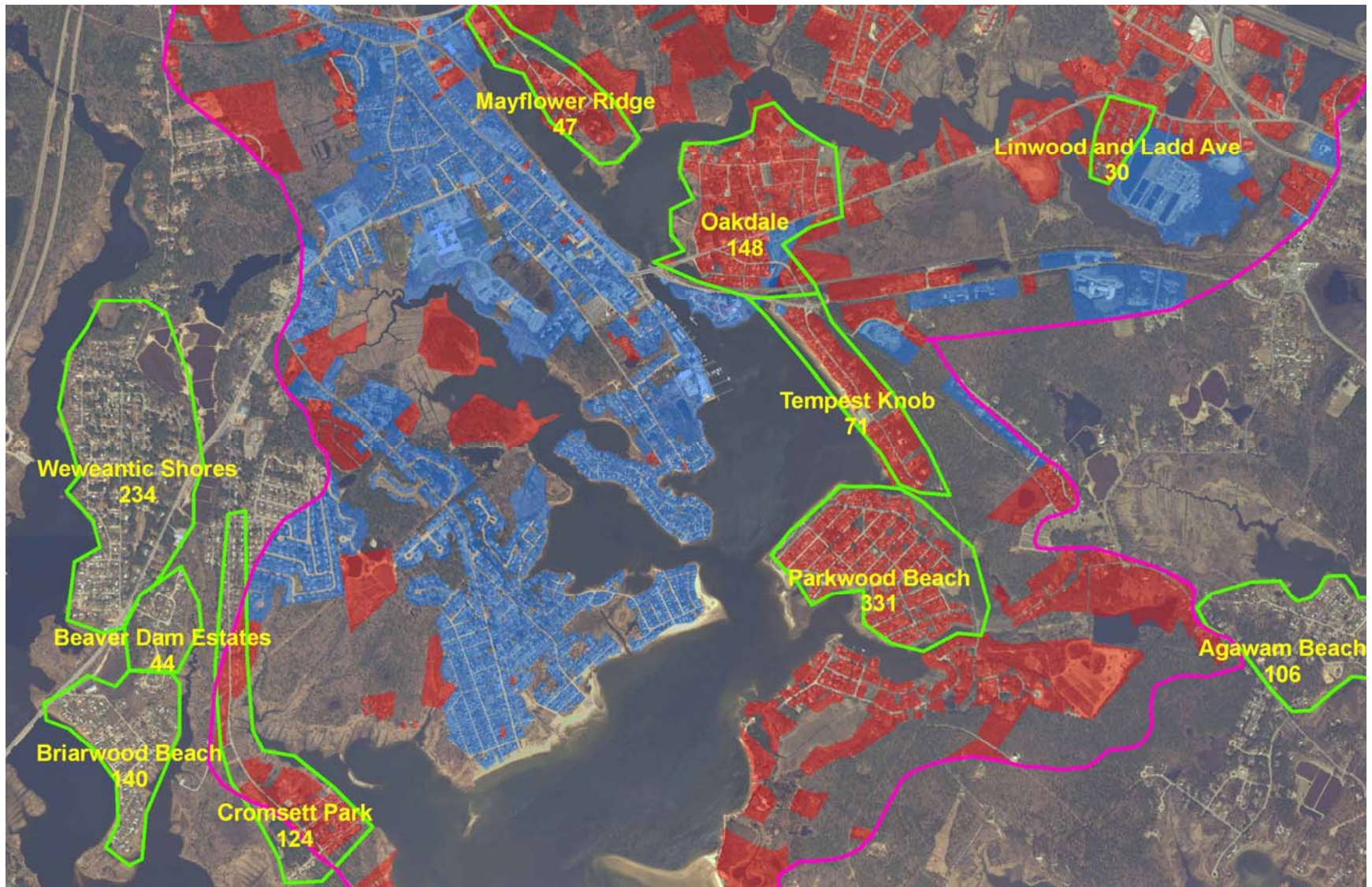


Figure 2. Areas served by sewer (shaded blue) and septic (shaded red) in the Wareham River watershed (pink boundary line). Areas to be sewered are outlined in green with estimated number of connections shown.