

## USGS Topographic Maps of Tidal Restrictions in the Buzzards Bay Watershed

Two-hundred and fifty-seven (257) sites were identified by the Buzzards Bay Project staff as causing restrictions to tidal flow in salt marshes located within the Buzzards Bay Watershed. The following section contains a series of USGS Topographic maps showing the locations of all potential restriction sites along with the approximate locations of stands of common reed (*Phragmites australis*).

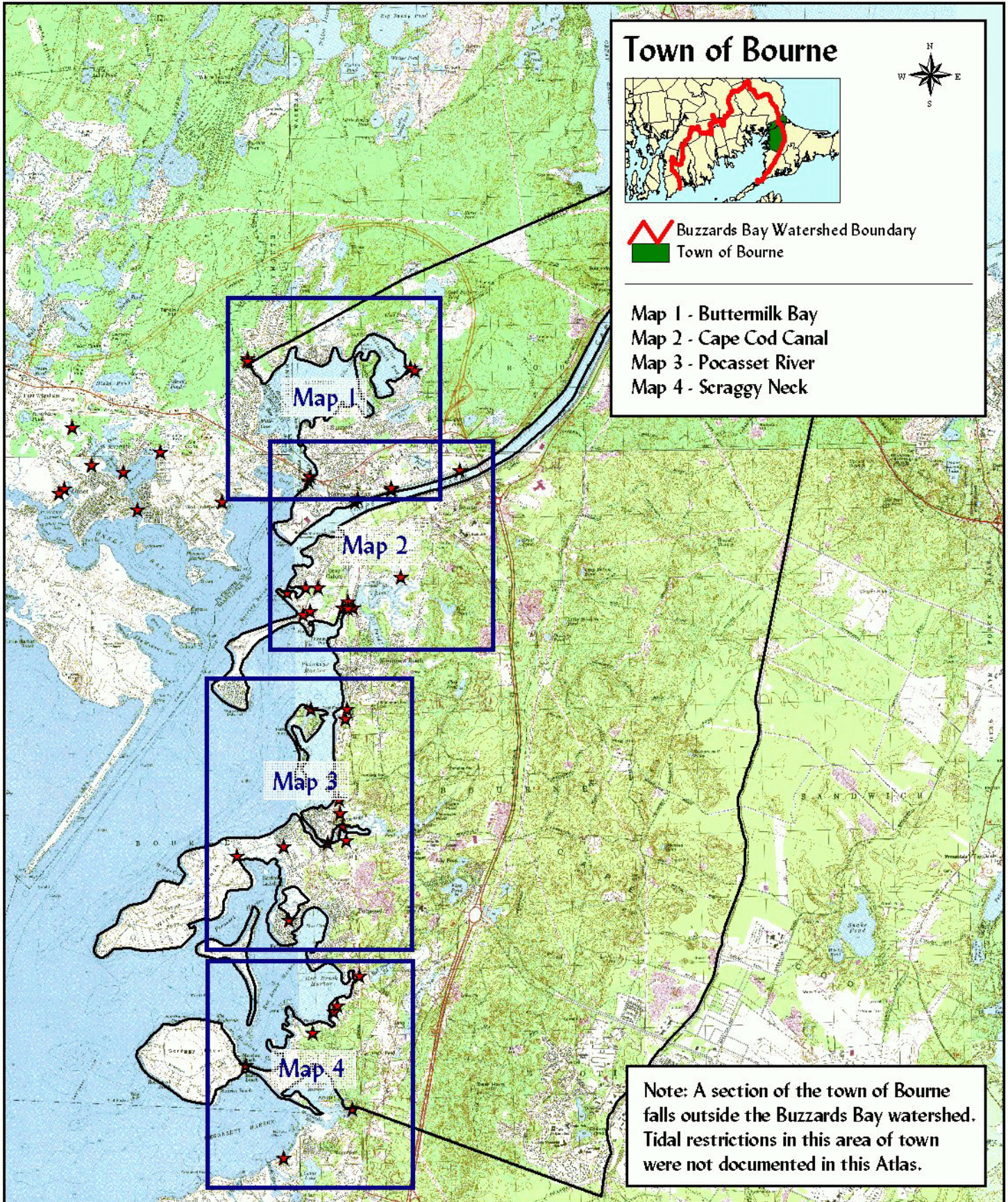
The Topographic maps are arranged alphabetically by town, with each section beginning with a locus map of the town. Individual sites in the Atlas were identified using a two-letter town code and a two-digit number code. For example, all sites within the Town of Mattapoisett begin with the letters MT, followed by a two digit site number. These codes may be used to access information about individual sites from Table 4 in the Results Section or in the Appendix of this document. Additionally, the complete database can be found on the Buzzards Bay Project's website, [www.buzzardsbay.org](http://www.buzzardsbay.org).

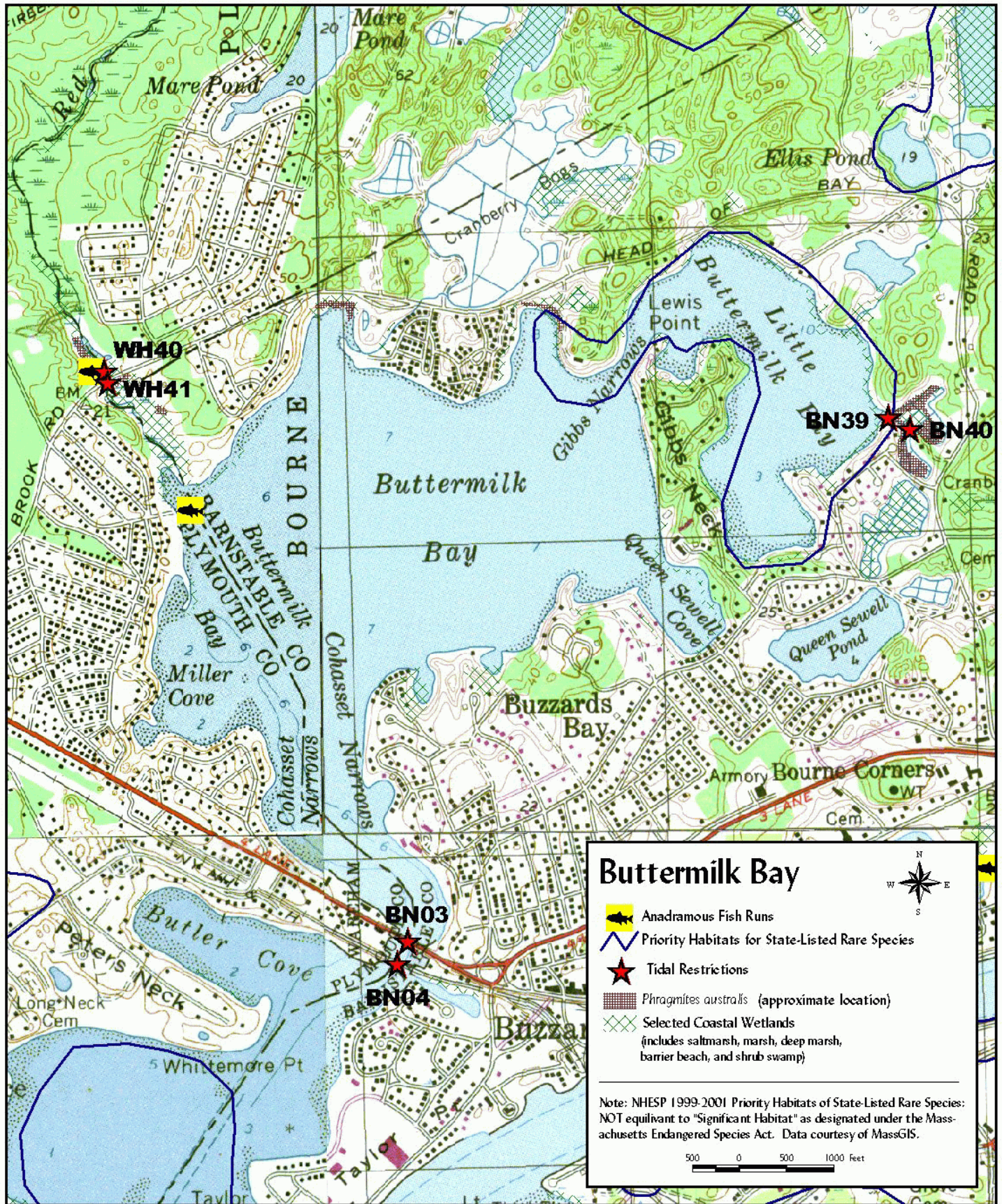
It should be noted that sections of the Towns of Bourne and Falmouth fall outside the Buzzards Bay watershed. While tidal restrictions may exist in these areas they have not been documented in this Atlas. The Cape Cod Commission identified eight restrictions located outside the Buzzards Bay watershed in Falmouth and zero in Bourne. Please consult the *Cape Cod Atlas of Tidally Restricted Salt Marshes - Cape Cod, Massachusetts* for more information.



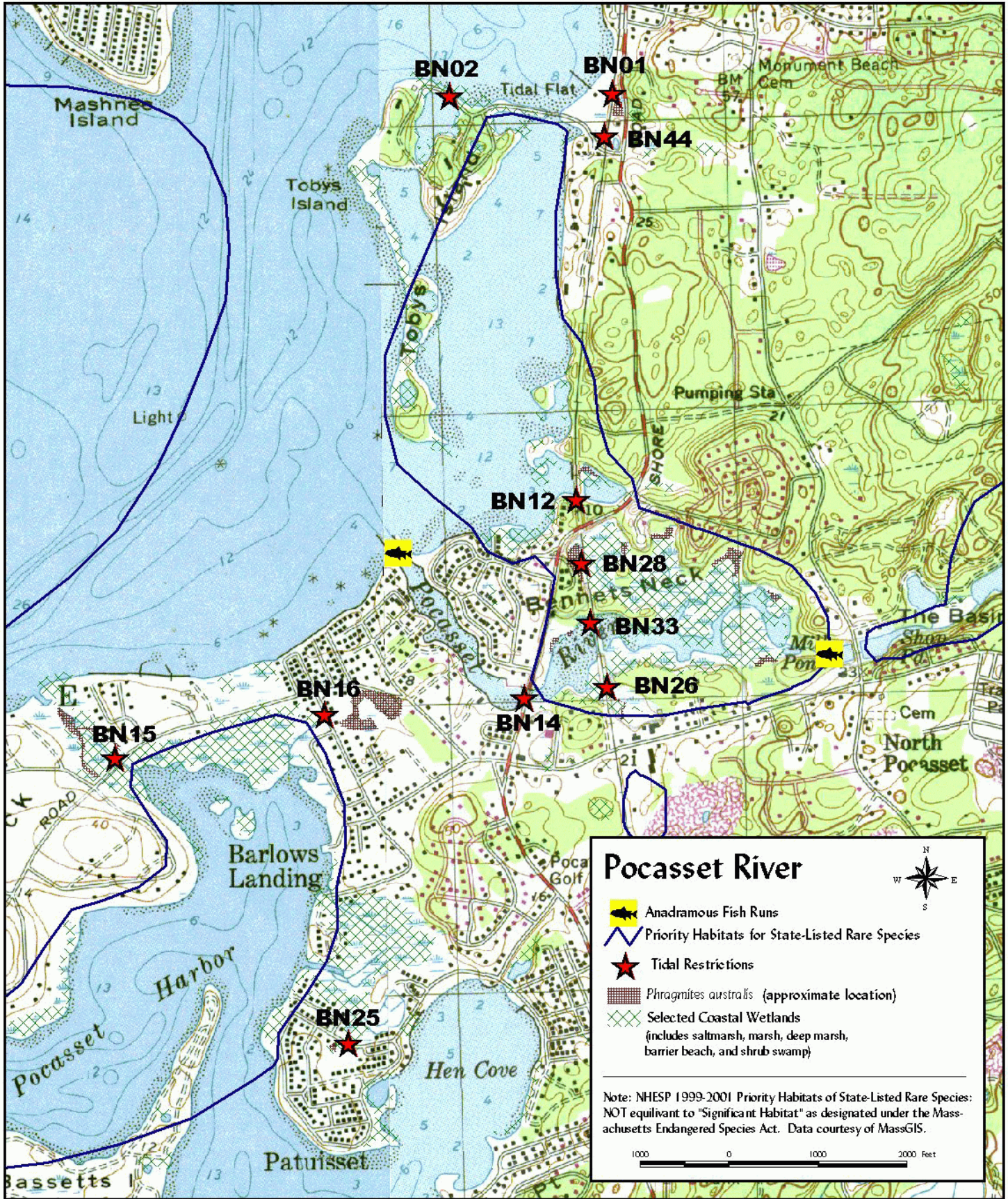
# Town of Bourne



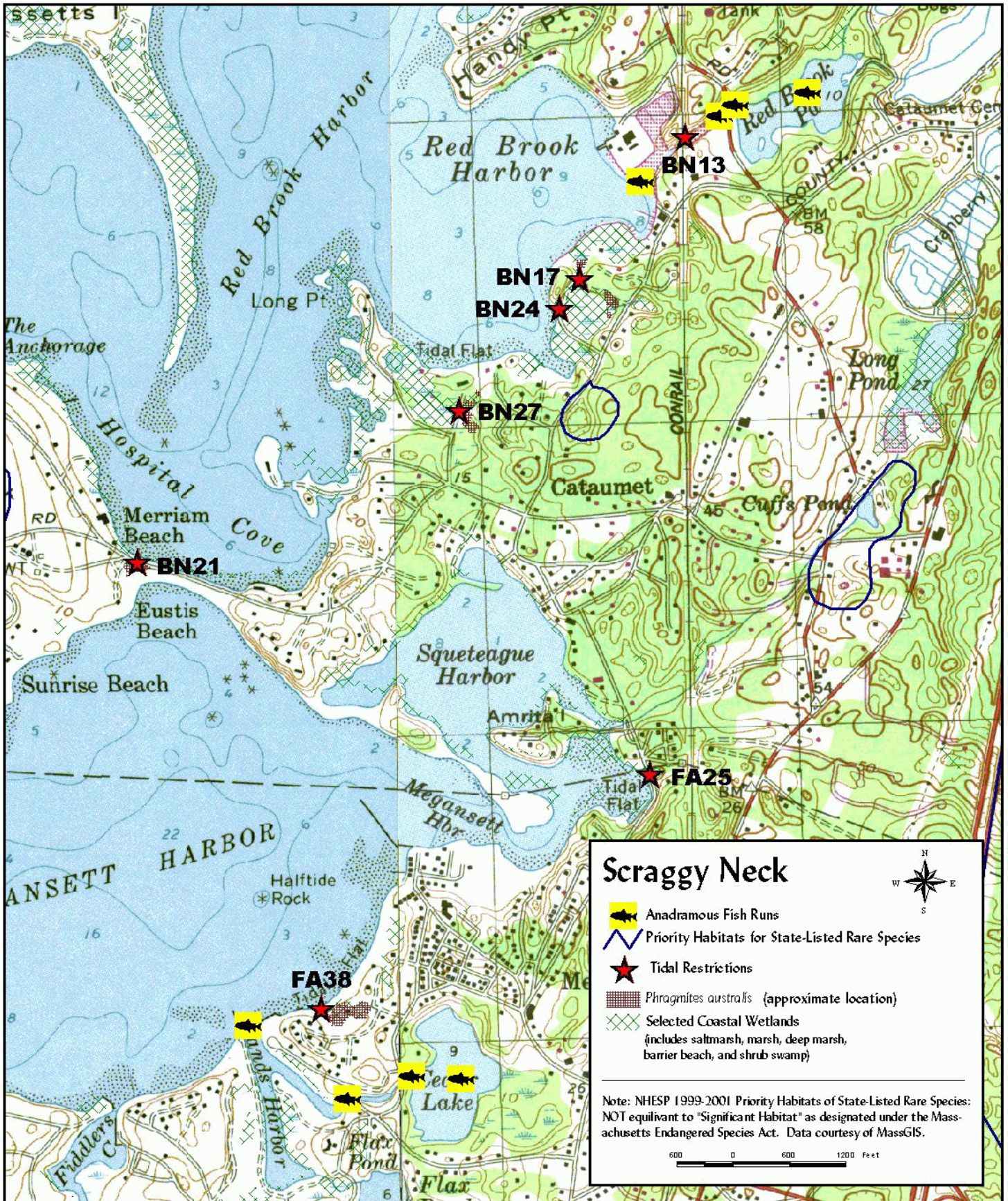








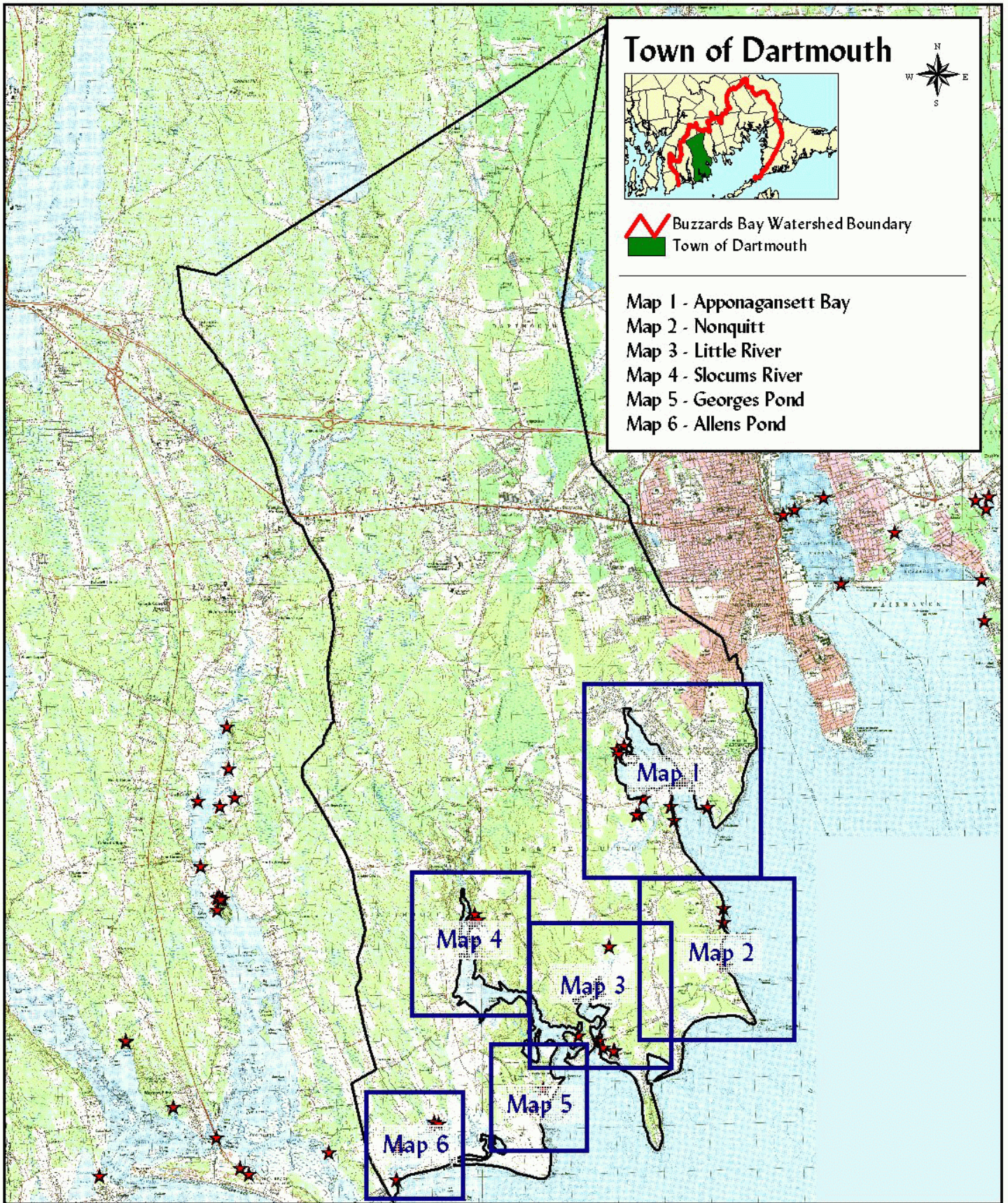




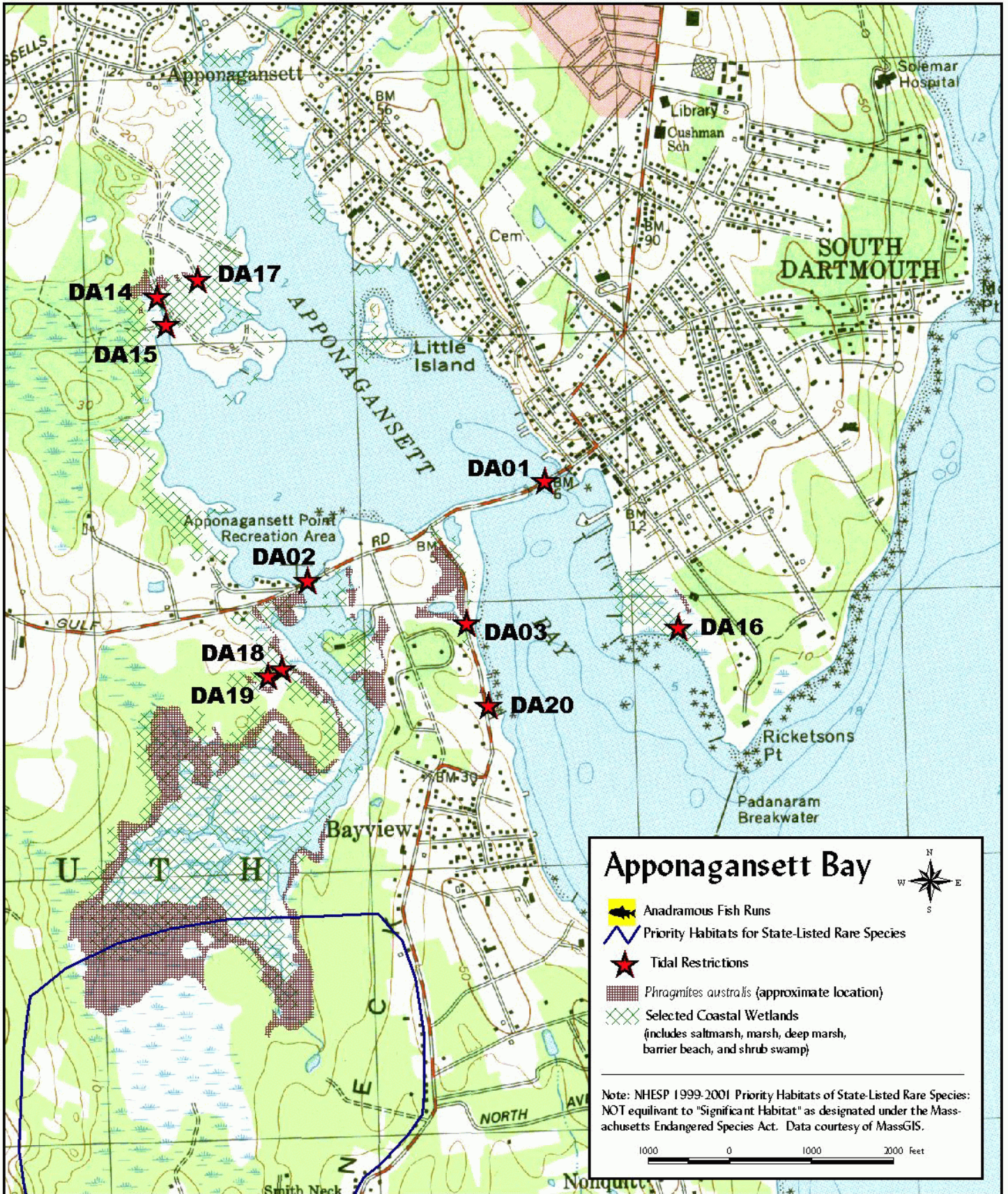


# Town of Dartmouth





# Dartmouth - Map 1

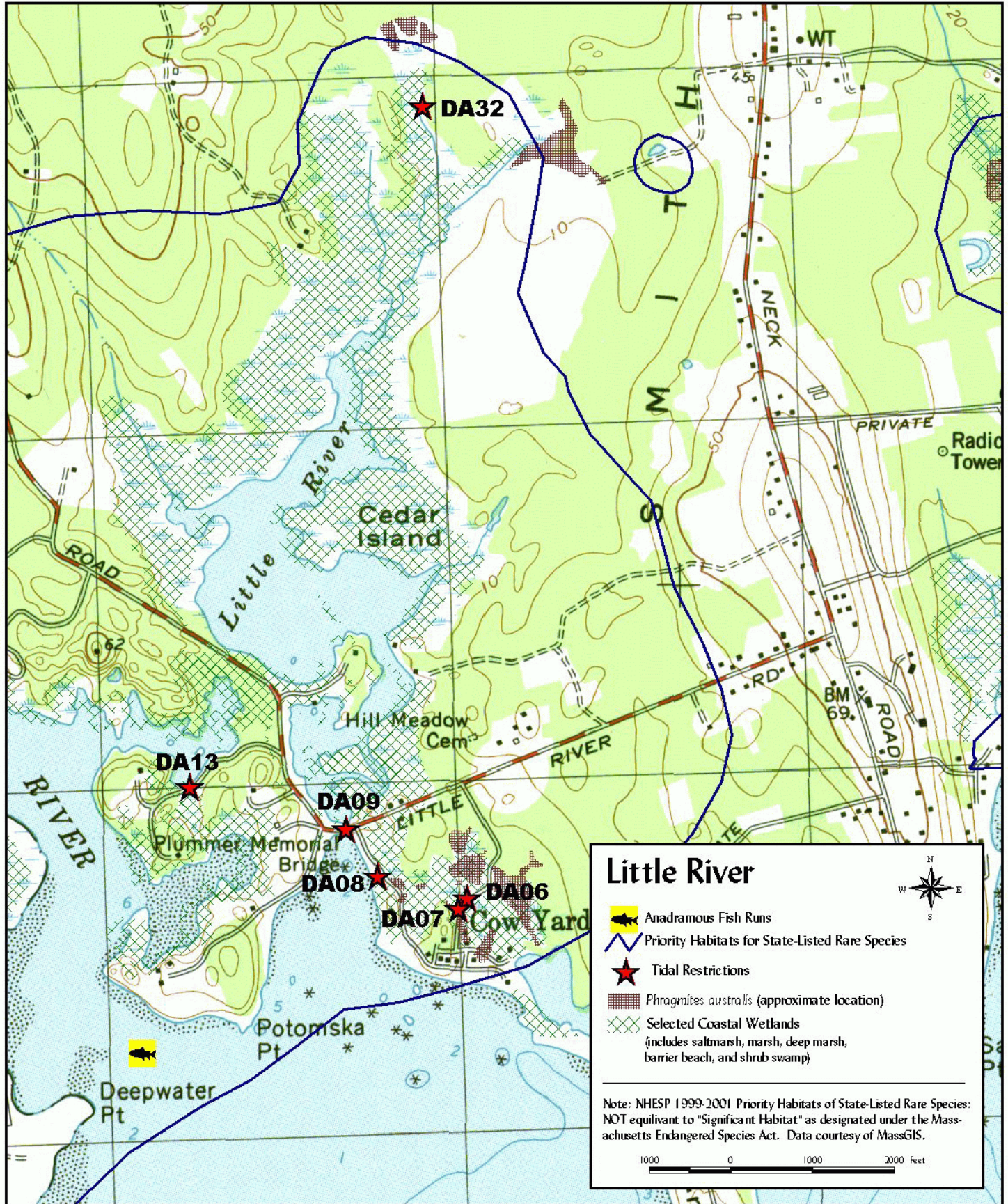


Prepared by Buzzards Bay Project National Estuary Program  
2870 Cranberry Highway, E. Wareham, MA 02538

Atlas of Tidally Restricted Salt Marshes in the Buzzards Bay Watershed  
March 2002



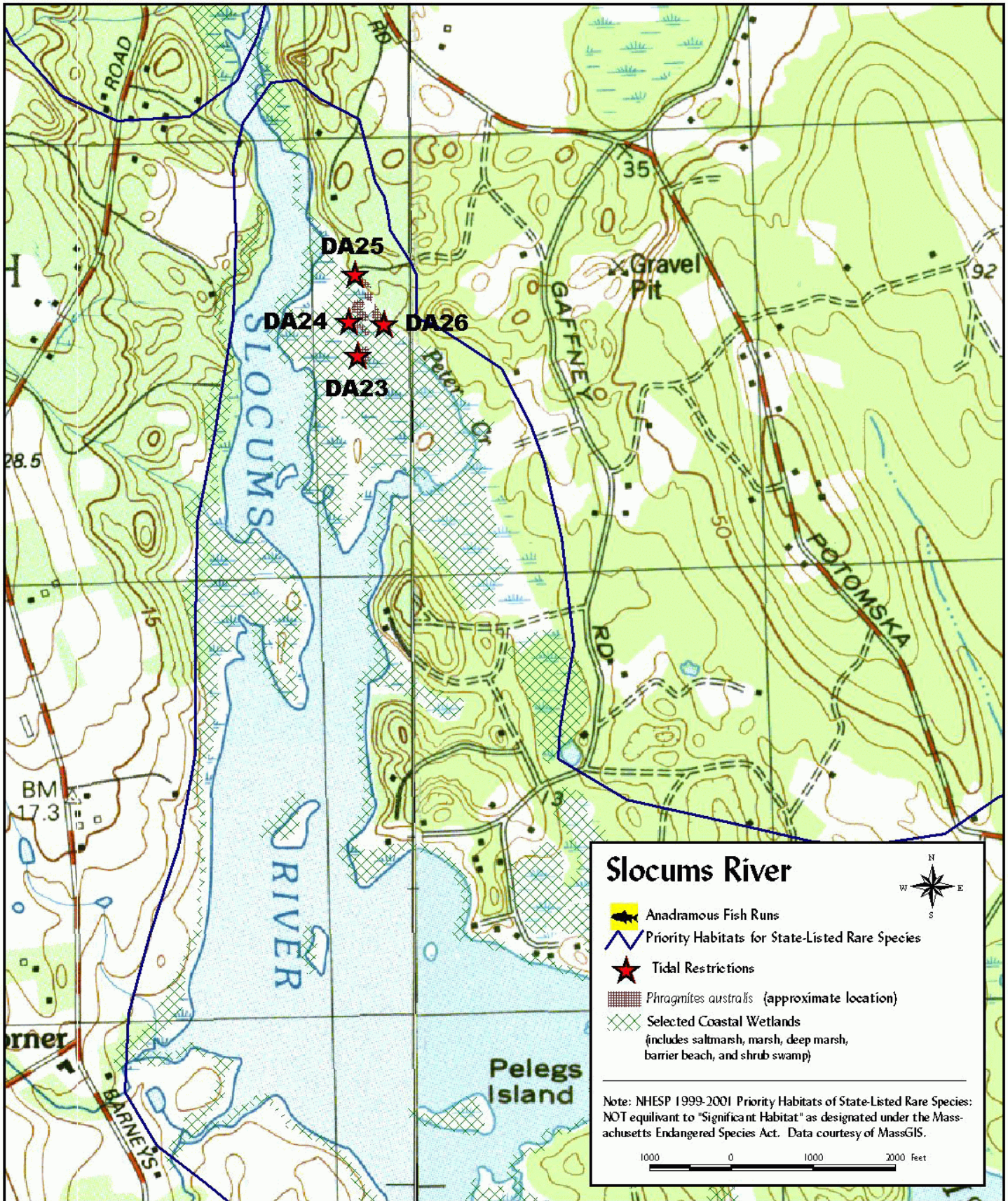
Dartmouth - Map 3

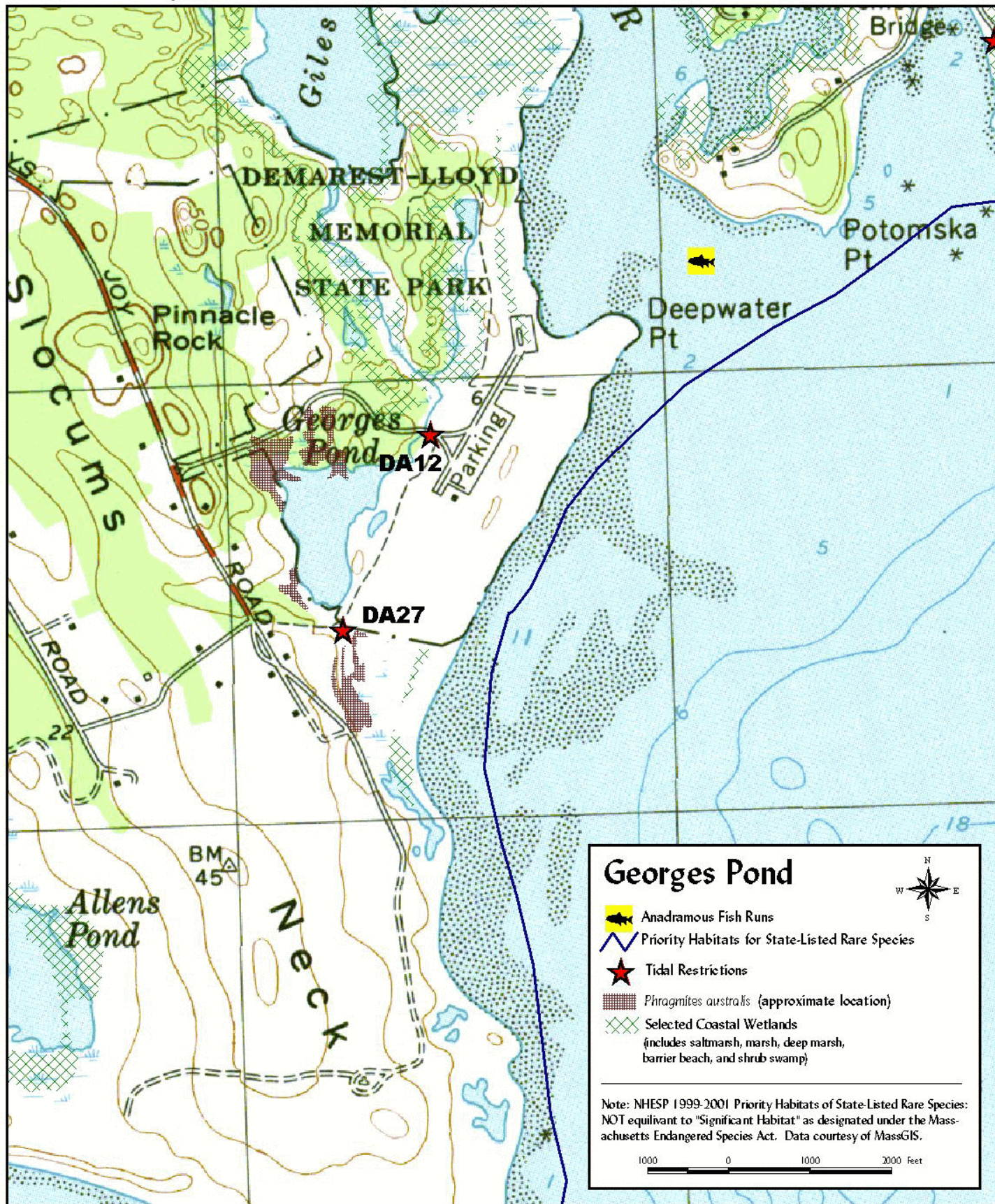


Prepared by Buzzards Bay Project National Estuary Program  
2870 Cranberry Highway, E. Wareham, MA 02538

Atlas of Tidally Restricted Salt Marshes in the Buzzards Bay Watershed  
March 2002





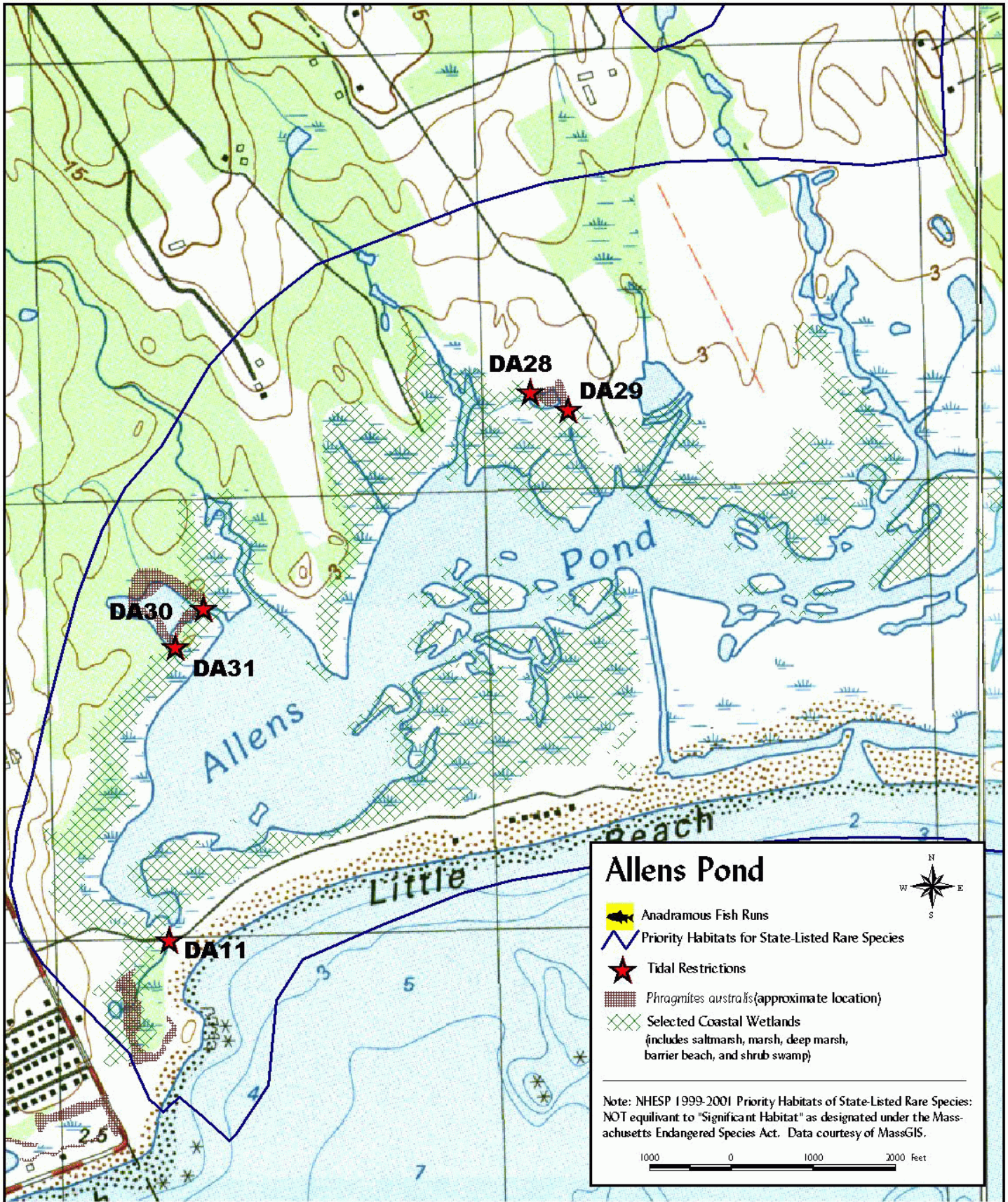


**Georges Pond**

- Anadromous Fish Runs
- Priority Habitats for State-Listed Rare Species
- Tidal Restrictions
- Phragmites australis* (approximate location)
- Selected Coastal Wetlands (includes saltmarsh, marsh, deep marsh, barrier beach, and shrub swamp)

Note: NHESP 1999-2001 Priority Habitats of State-Listed Rare Species: NOT equivalent to "Significant Habitat" as designated under the Massachusetts Endangered Species Act. Data courtesy of MassGIS.

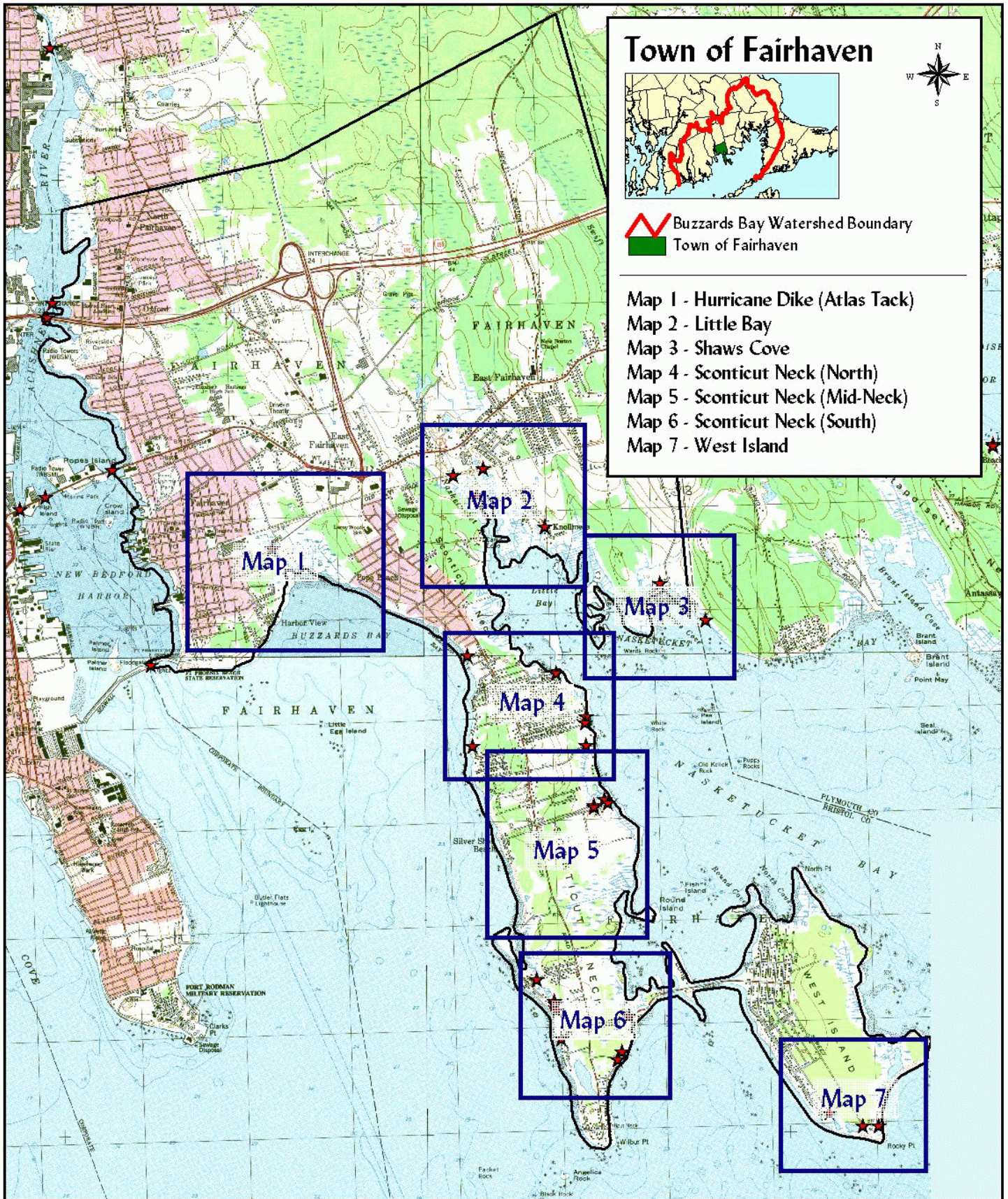
1000 0 1000 2000 Feet







# Town of Fairhaven





**Town of Fairhaven**

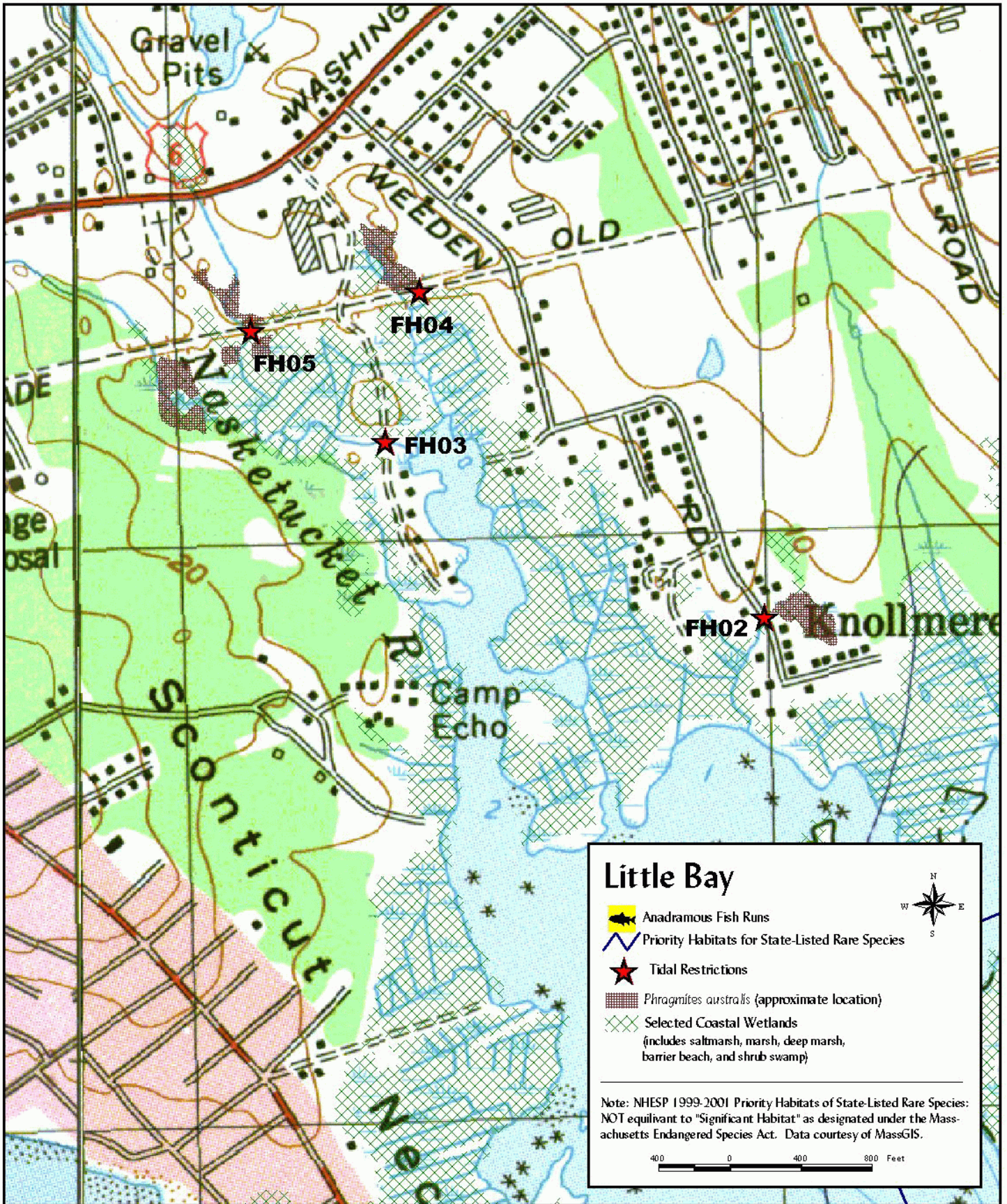


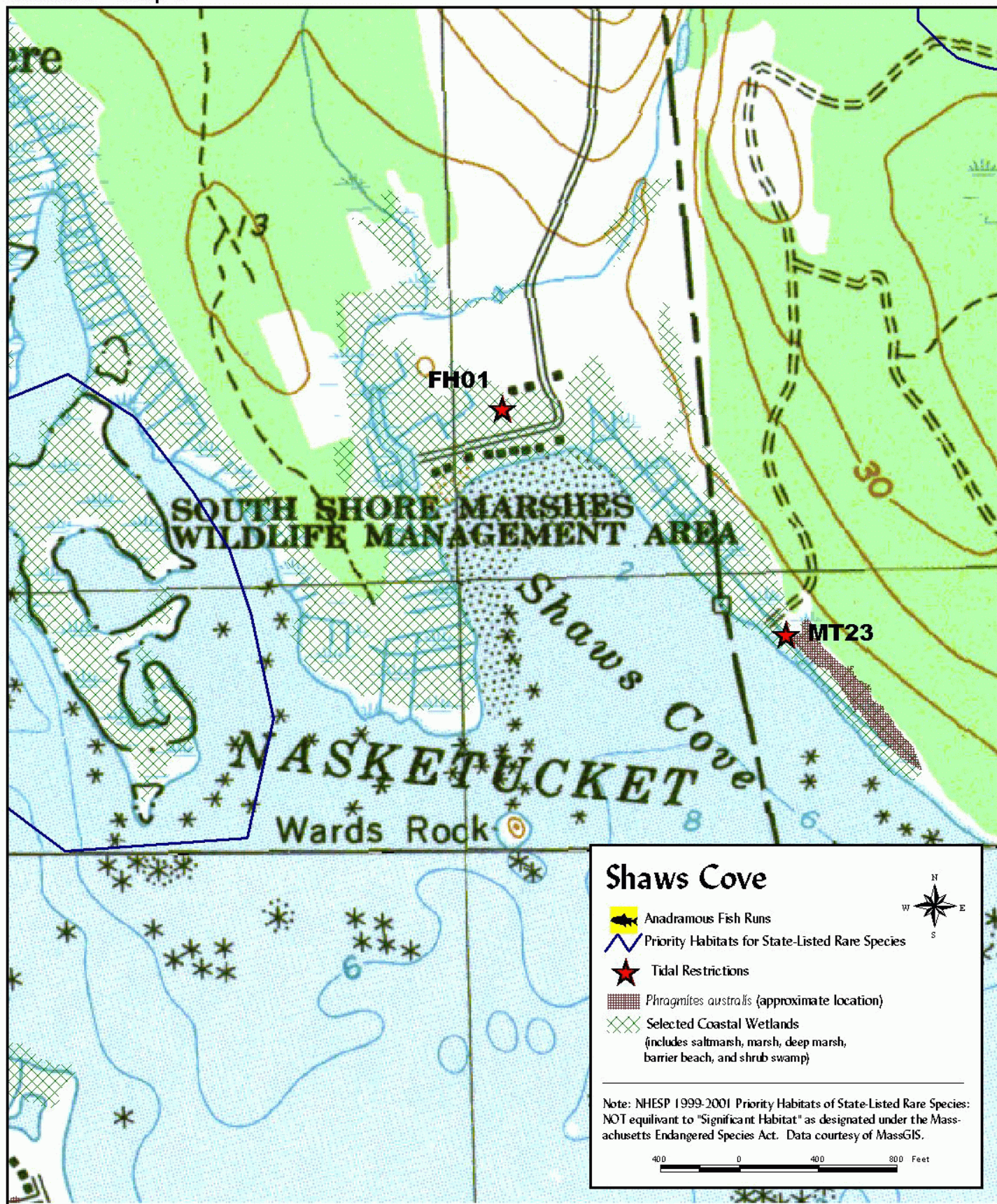
-  Buzzards Bay Watershed Boundary
-  Town of Fairhaven

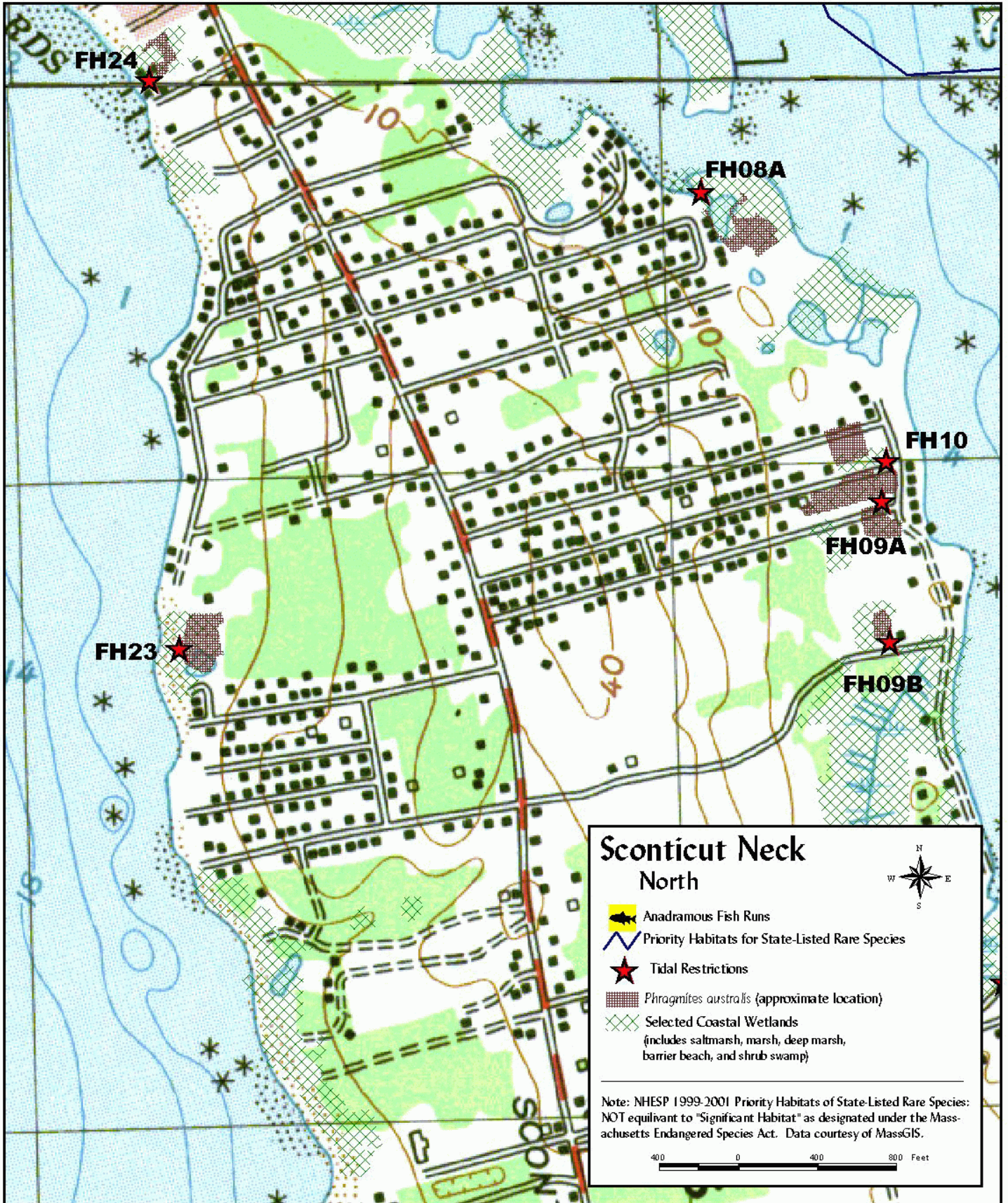
- Map 1 - Hurricane Dike (Atlas Tack)
- Map 2 - Little Bay
- Map 3 - Shaws Cove
- Map 4 - Scoticus Neck (North)
- Map 5 - Scoticus Neck (Mid-Neck)
- Map 6 - Scoticus Neck (South)
- Map 7 - West Island

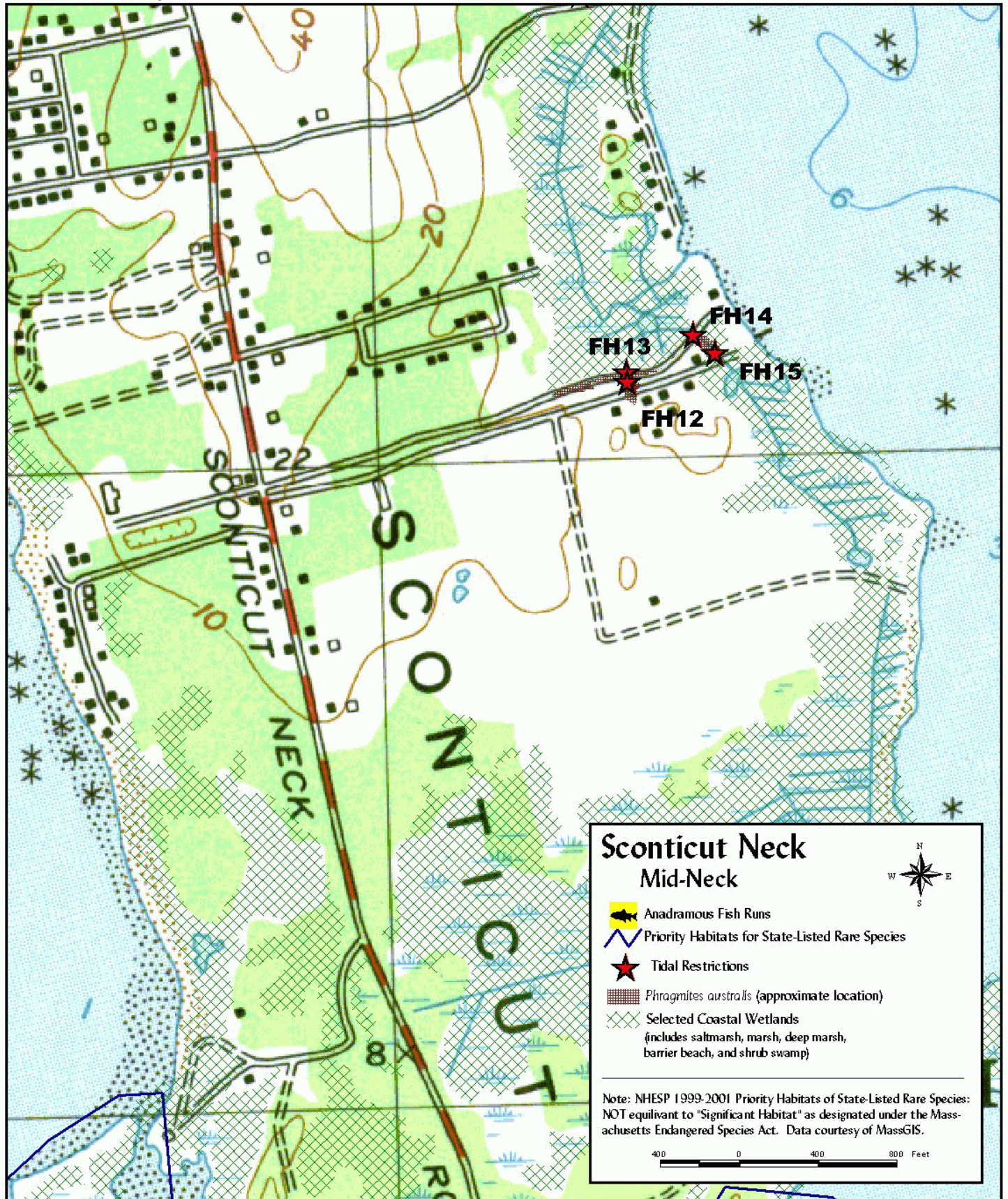


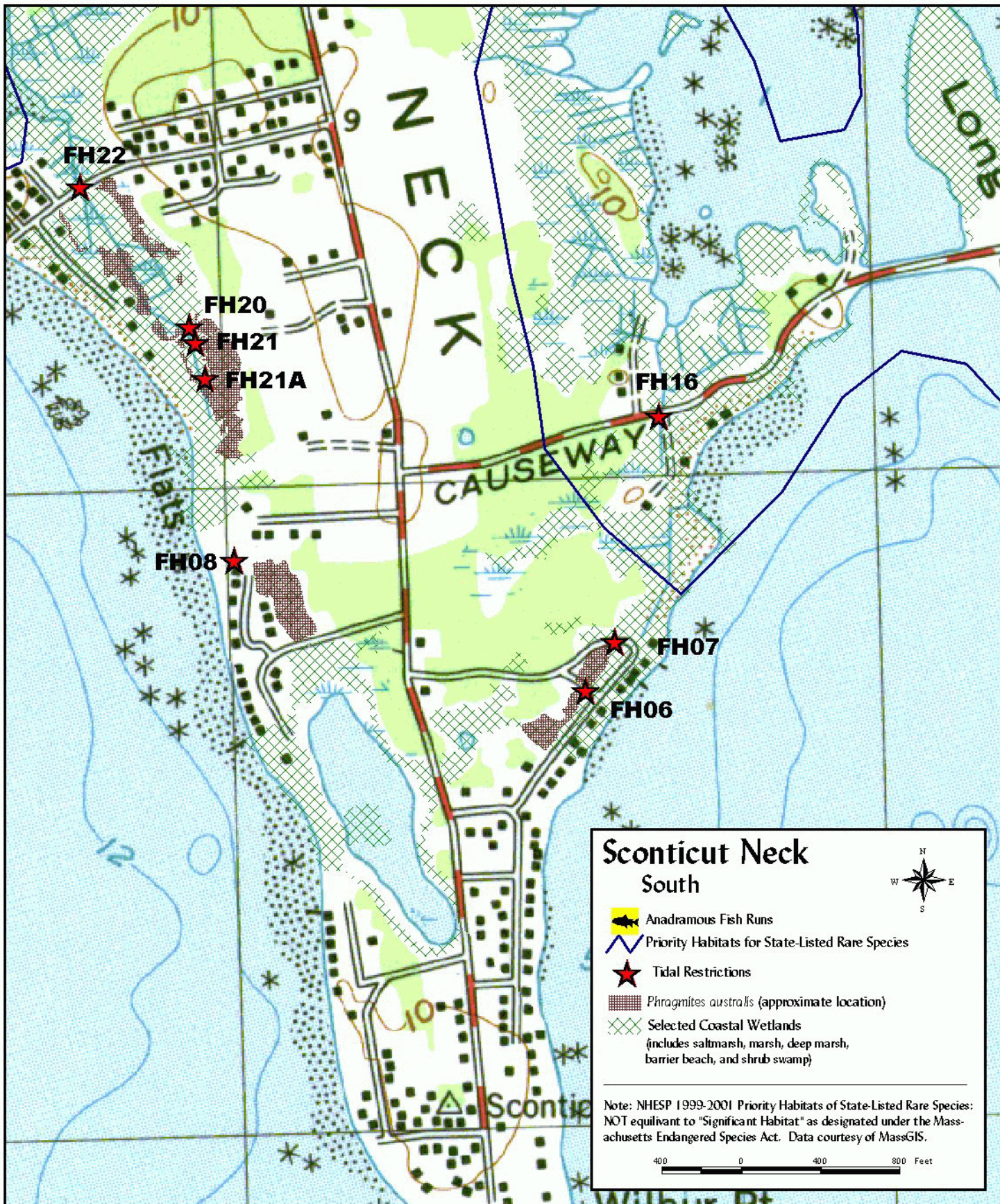


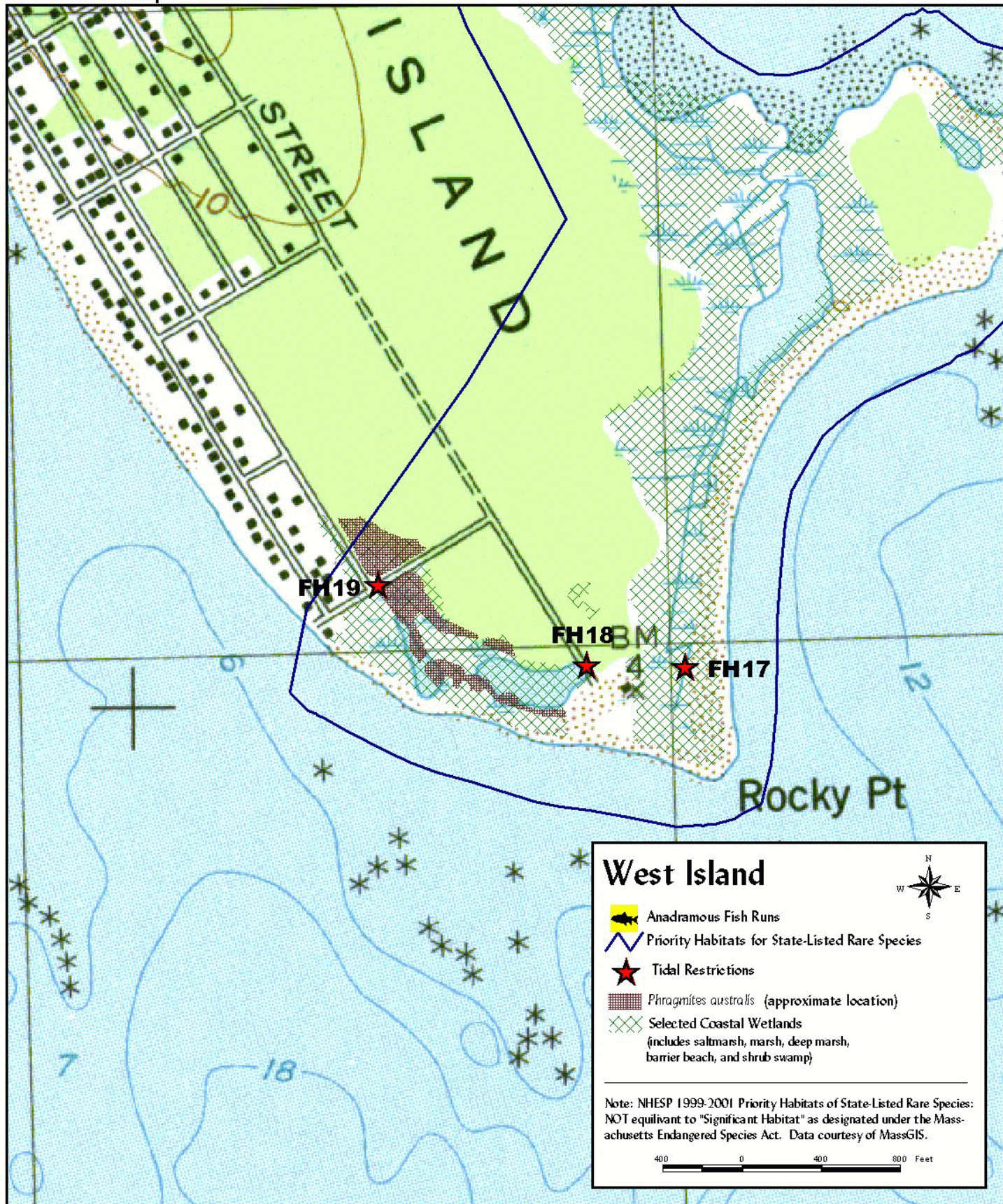








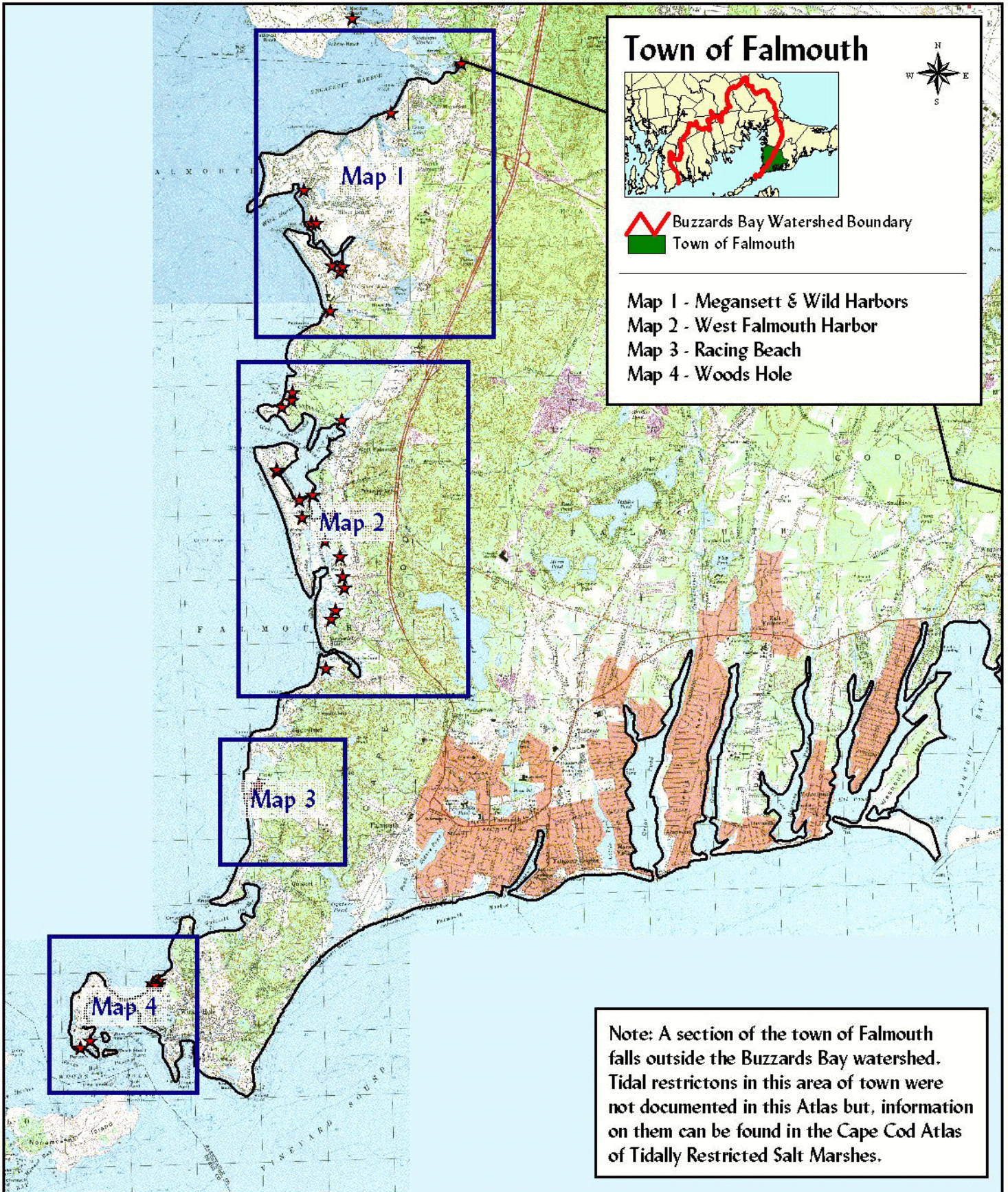




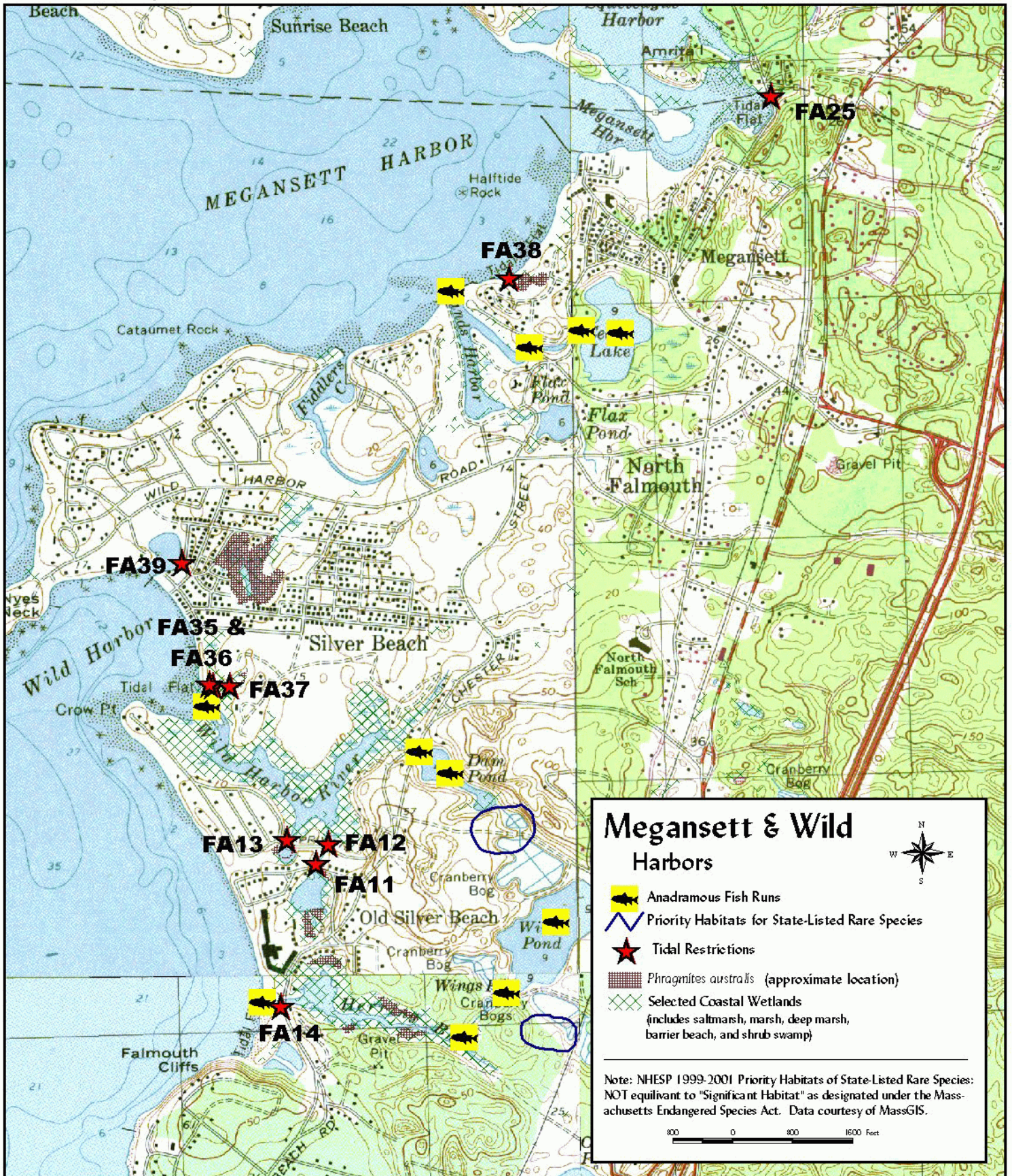
# Town of Falmouth

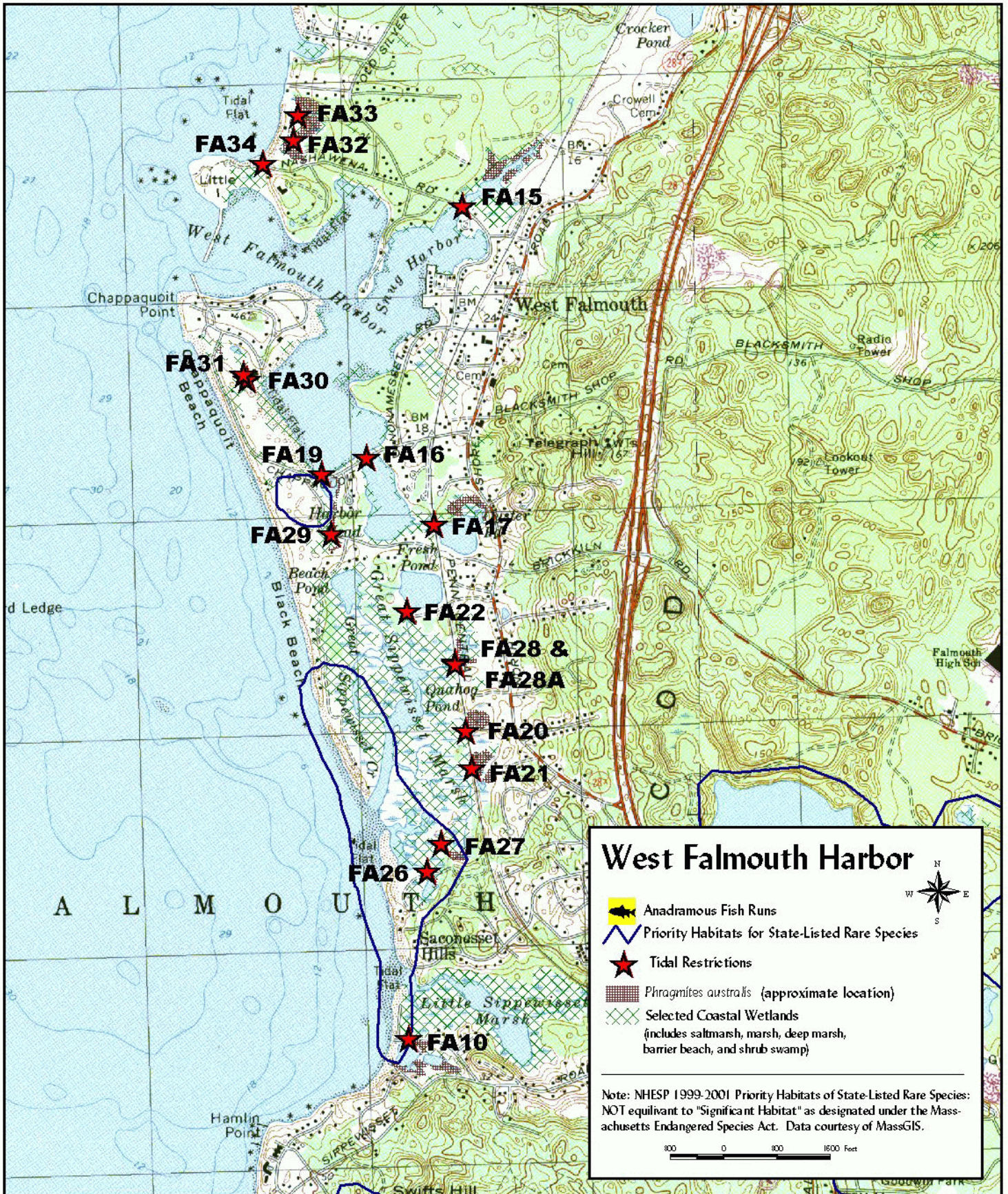






# Falmouth - Map 1





### West Falmouth Harbor

- Anadromous Fish Runs
- Priority Habitats for State-Listed Rare Species
- Tidal Restrictions
- Phragmites australis* (approximate location)
- Selected Coastal Wetlands (includes saltmarsh, marsh, deep marsh, barrier beach, and shrub swamp)

Note: NHESP 1999-2001 Priority Habitats of State-Listed Rare Species: NOT equivalent to "Significant Habitat" as designated under the Massachusetts Endangered Species Act. Data courtesy of MassGIS.

