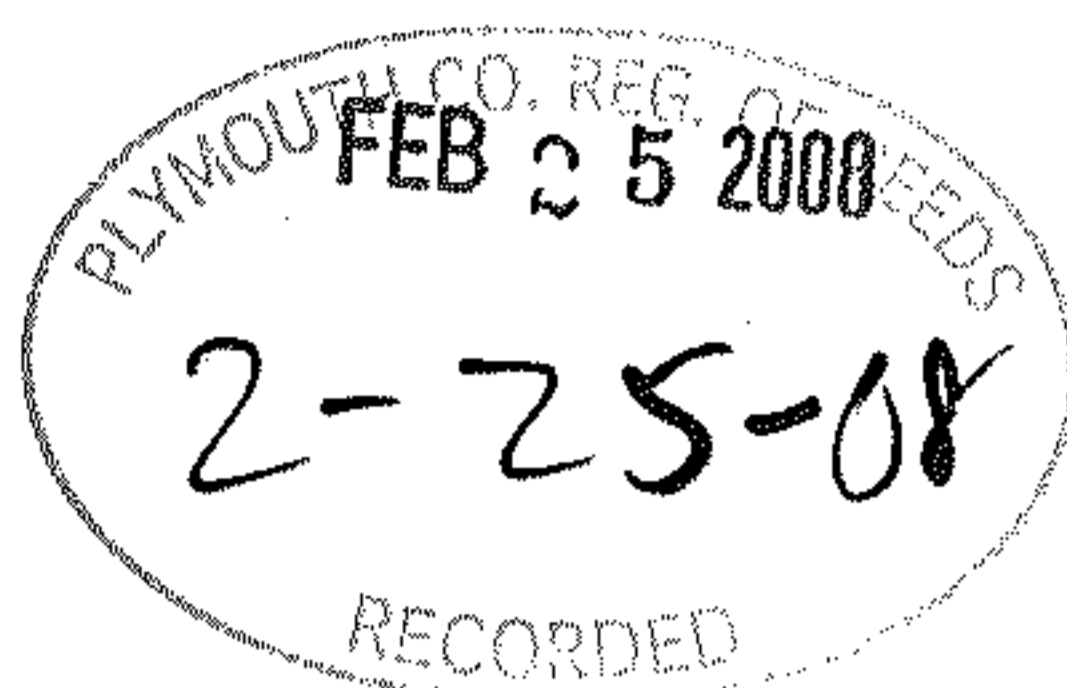


REGISTRY USE:



08-100

I CERTIFY THAT THIS PLAN CONFORMS WITH THE RULES
AND REGULATIONS OF THE REGISTRY OF DEEDS.

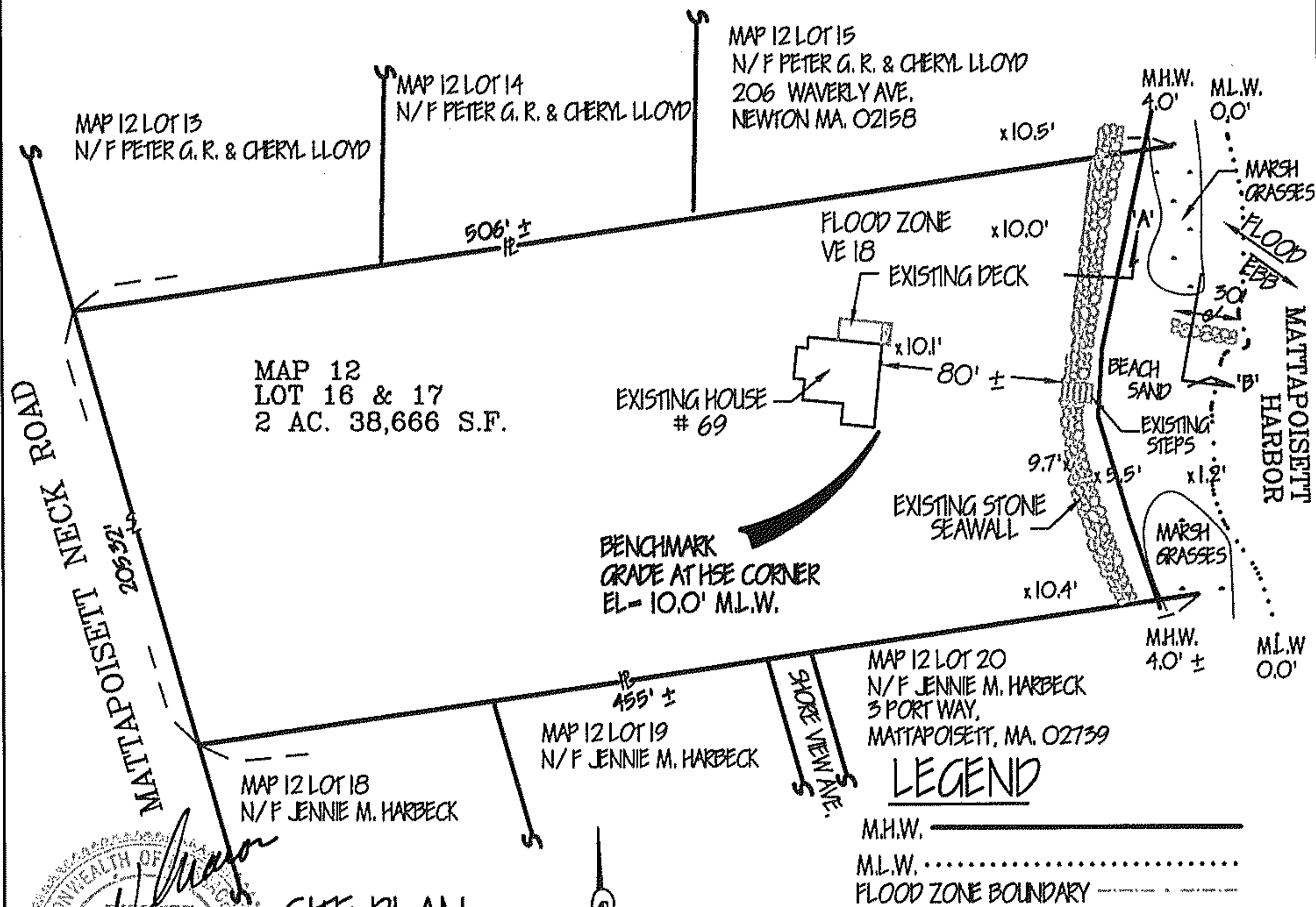
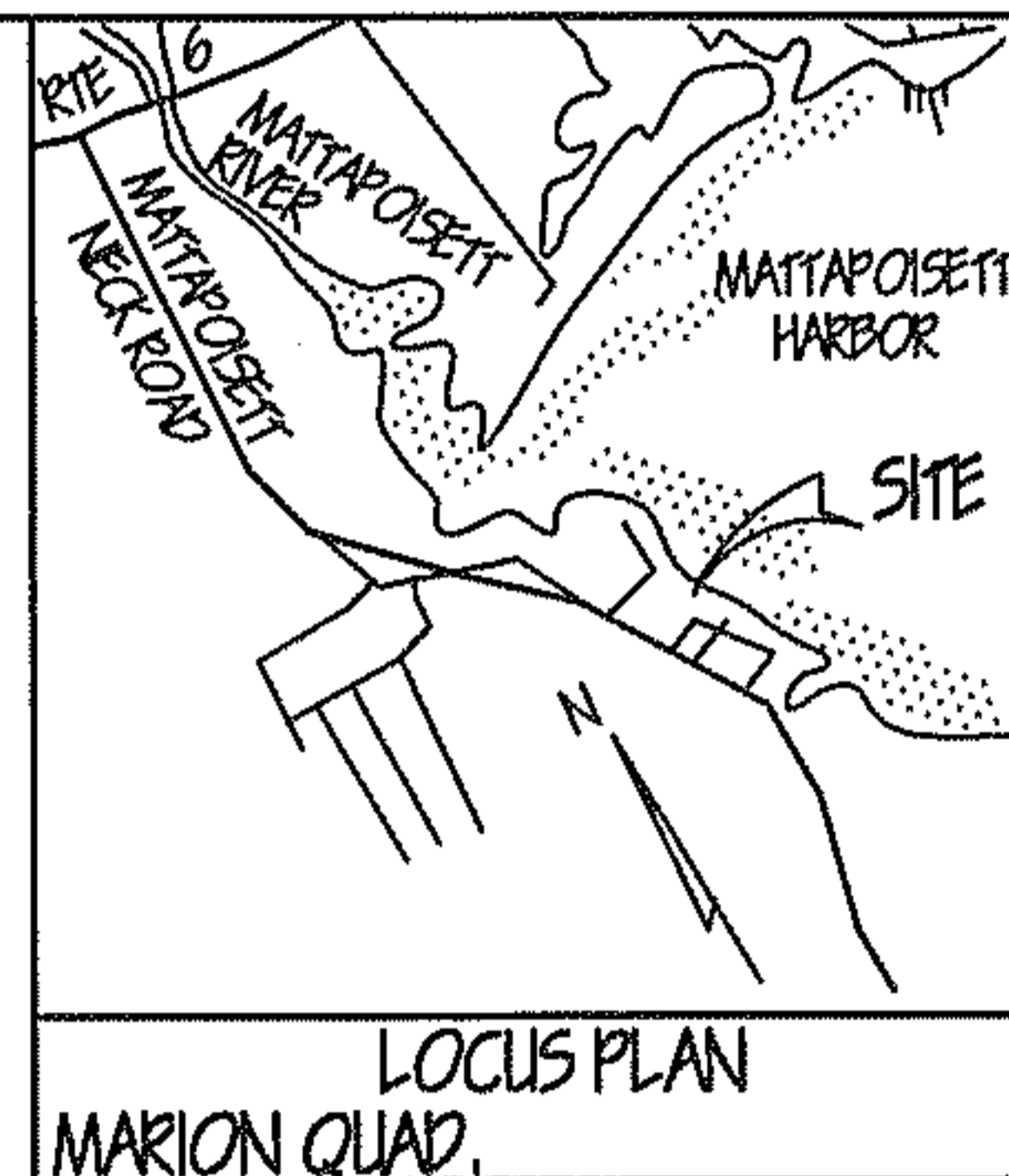
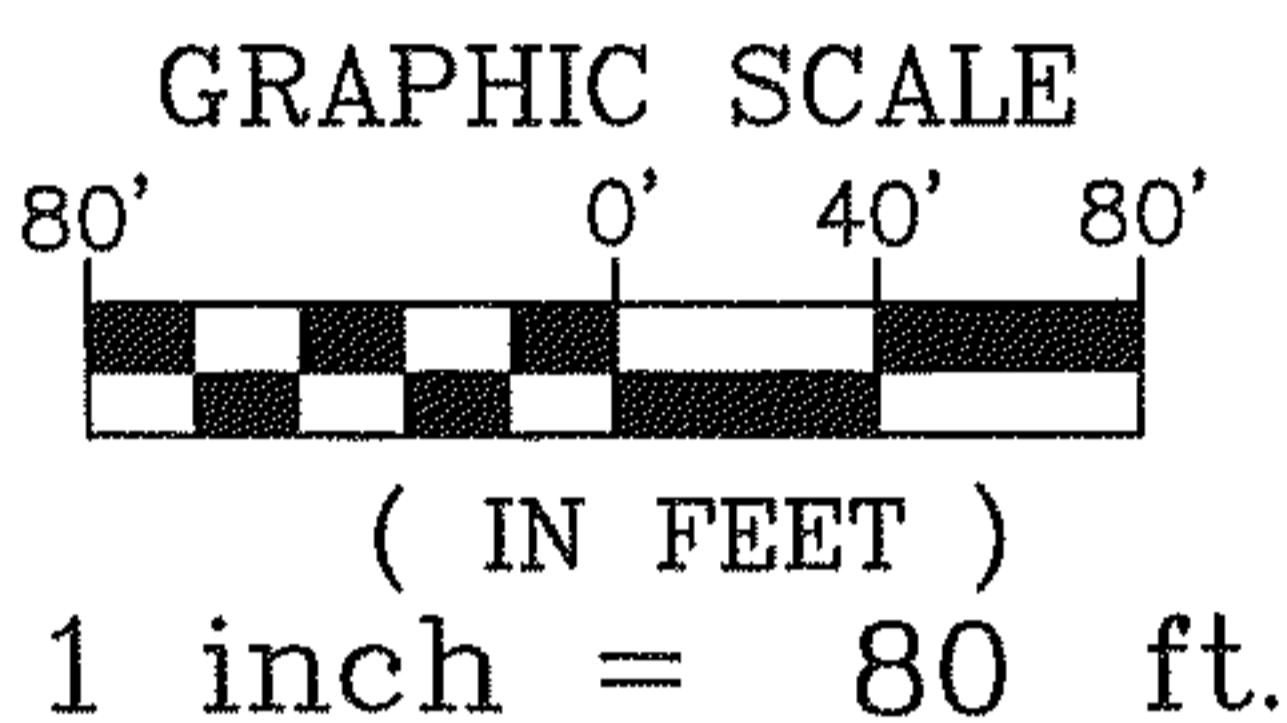
Carmelo Nicolosi

PREPARER

001-80

GENERAL NOTES:

- 1) FLOOD ZONES ARE AS DELINEATED ON FEMA PANEL
NUMBER 25514 0010D REVISED JULY 2, 1987.
- 2) DATUM = M.L.W. = 0.0'
- 3) THERE IS NO RECORD OF HISTORIC HIGH WATER LINE.



SITE PLAN
SCALE 1" = 80'

PLAN ACCOMPANYING PETITION OF:

SOPHIE LaFRANCE
ASSESSORS MAP 12 LOTS 16 & 17
TO LICENSE AND MAINTAIN EXISTING
RETAINING SEAWALL AND GROIN IN BUZZARDS BAY,
69 MATTAPoisETT NECK ROAD
MATTAPoisETT, MA. PLYMOUTH COUNTY.
PAGE 1 OF 2 DATE SEPTEMBER 21, 1996 REV:

PREPARED BY:
CHARON ASSOCIATES, INC.
CONSULTING ENGINEERS
323 NECK ROAD, ROCHESTER, MA 02770

LICENSE PLAN NO. 11205
Approved by Department of Environmental Protection
of Massachusetts
Buck JAN 16 2008

Plymouth County Registry of Deeds

PLANBOOK 54 PAGE 76

#14813

ck 150.00

(10K2)

08-100

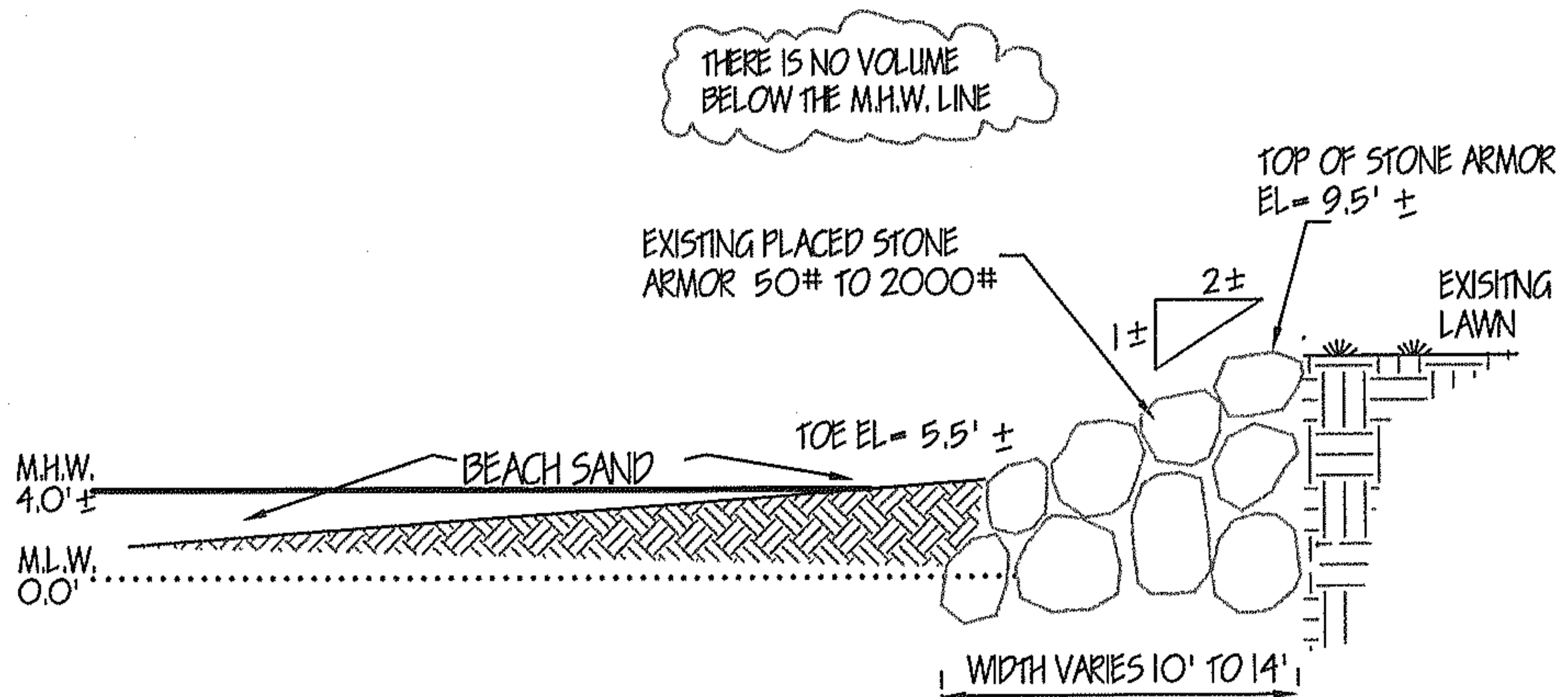
LaFrance 2/25
#100

REGISTRY USE:

I CERTIFY THAT THIS PLAN CONFORMS WITH THE RULES
AND REGULATIONS OF THE REGISTRY OF DEEDS.

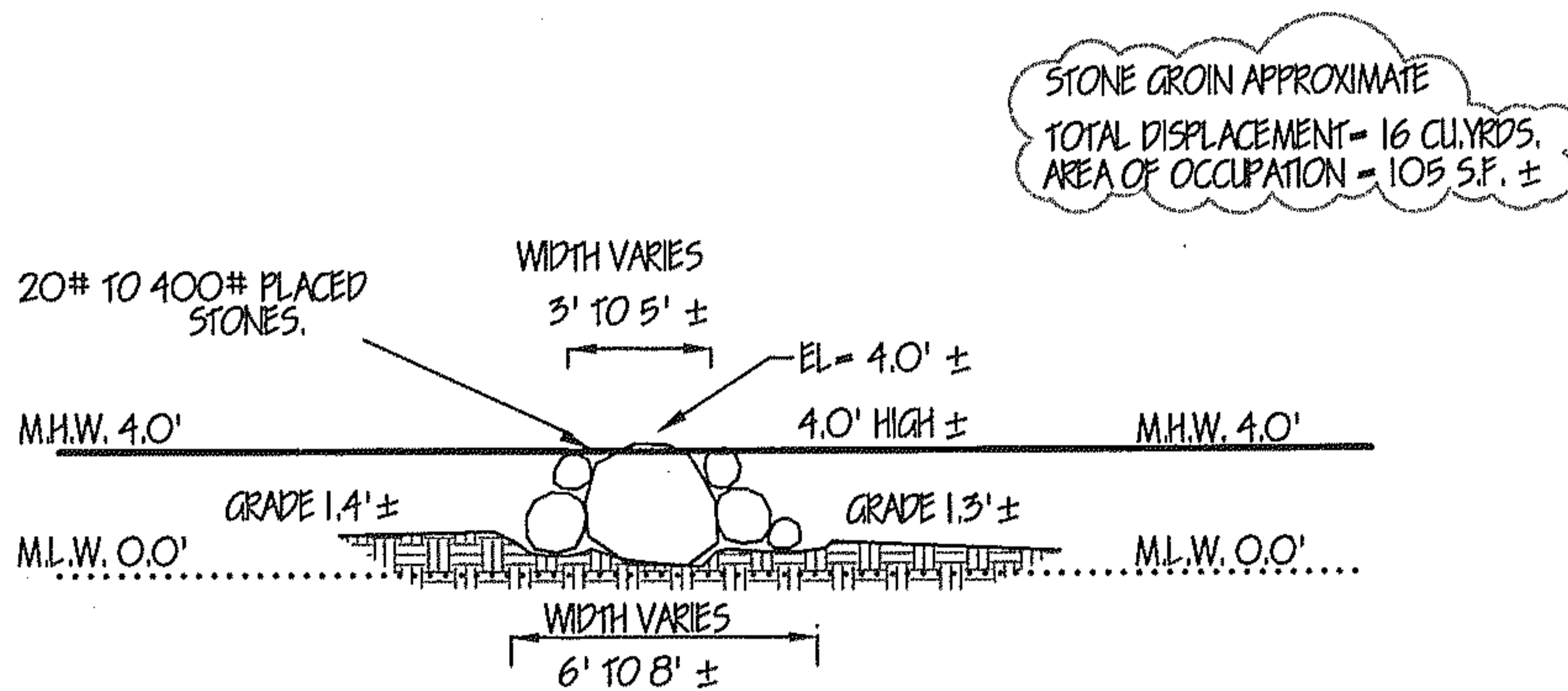
Carmelo Nicolosi

PREPARER



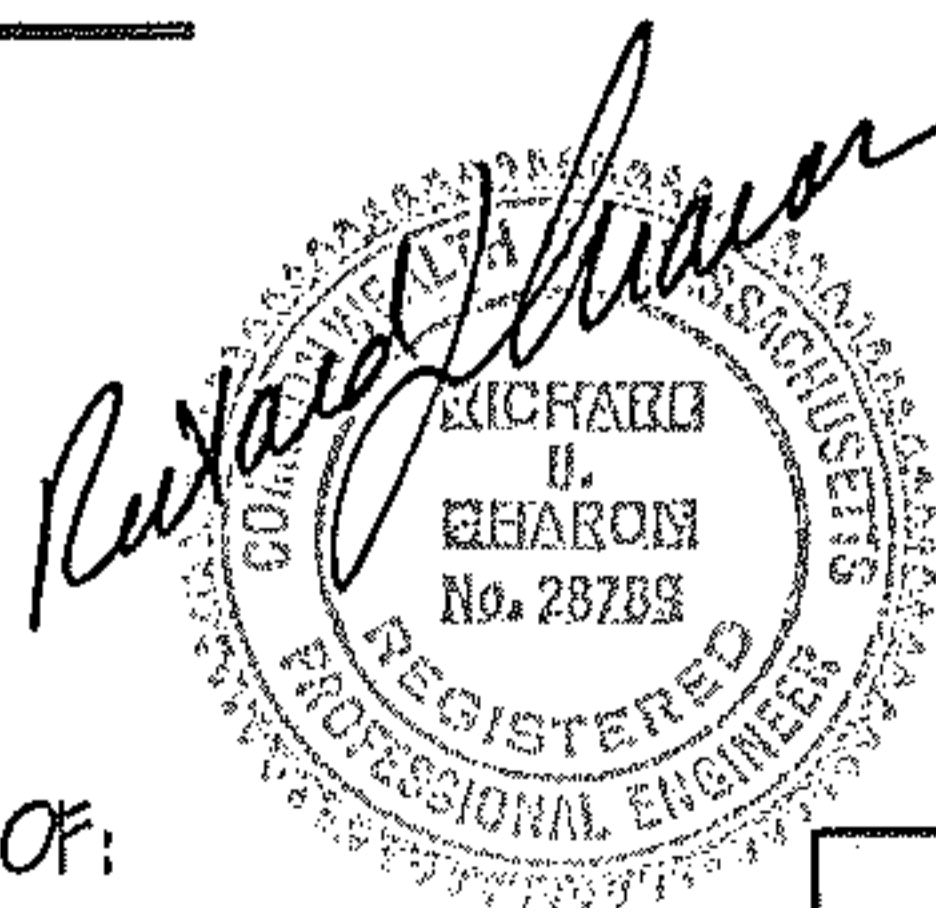
TYPICAL CROSS SECTION "A"

SCALE 1/10" = 1'-0"



TYPICAL CROSS SECTION "B"

SCALE 1/8" = 1'-0"



PREPARED BY:

CHARON ASSOCIATES, INC.
CONSULTING ENGINEERS
323 NECK ROAD, ROCHESTER, MA 02770

PLAN ACCOMPANYING PETITION OF:

SOPHIE LaFRANCE
ASSESSORS MAP 12 LOTS 16 & 17
TO LICENSE AND MAINTAIN EXISTING
RETAINING SEAWALL AND GROIN IN BUZZARDS BAY,
69 MATTAPOISETT NECK ROAD
MATTAPOISETT, MA, PLYMOUTH COUNTY.
PAGE 2 OF 2 DATE SEPTEMBER 21, 1996 REV:

LICENSE PLAN NO. 11205

Approved by Department of Environmental Protection

DATE JAN 16 2008