

02-860

FOR REGISTRY USE ONLY

"I CERTIFY THAT THIS PLAN CONFORMS WITH THE RULES AND REGULATIONS OF THE REGISTERS OF DEEDS."

David M. Daignon
PREPARER

PLAN REFERENCES:

BEING A DIVISION OF LOTS "A" AND "B" ON A PLAN ENTITLED: "APPROVAL NOT REQUIRED PLAN" OF LOTS #89 AND #218 ON ASSESSORS MAP #5 ON SPRUCE AVENUE IN MATTAPOISETT, MA. PREPARED FOR SCOTT E. SNOW AND ELIZABETH F. SNOW, SCALE: 1"=60', DATE: NOVEMBER 16, 2001, N. DOUGLAS SCHNEIDER & ASSOCIATES, INC., PROFESSIONAL CIVIL ENGINEERS, 1 COUNTY ROAD P.O. BOX 480, MATTAPOISETT, MA. 02739

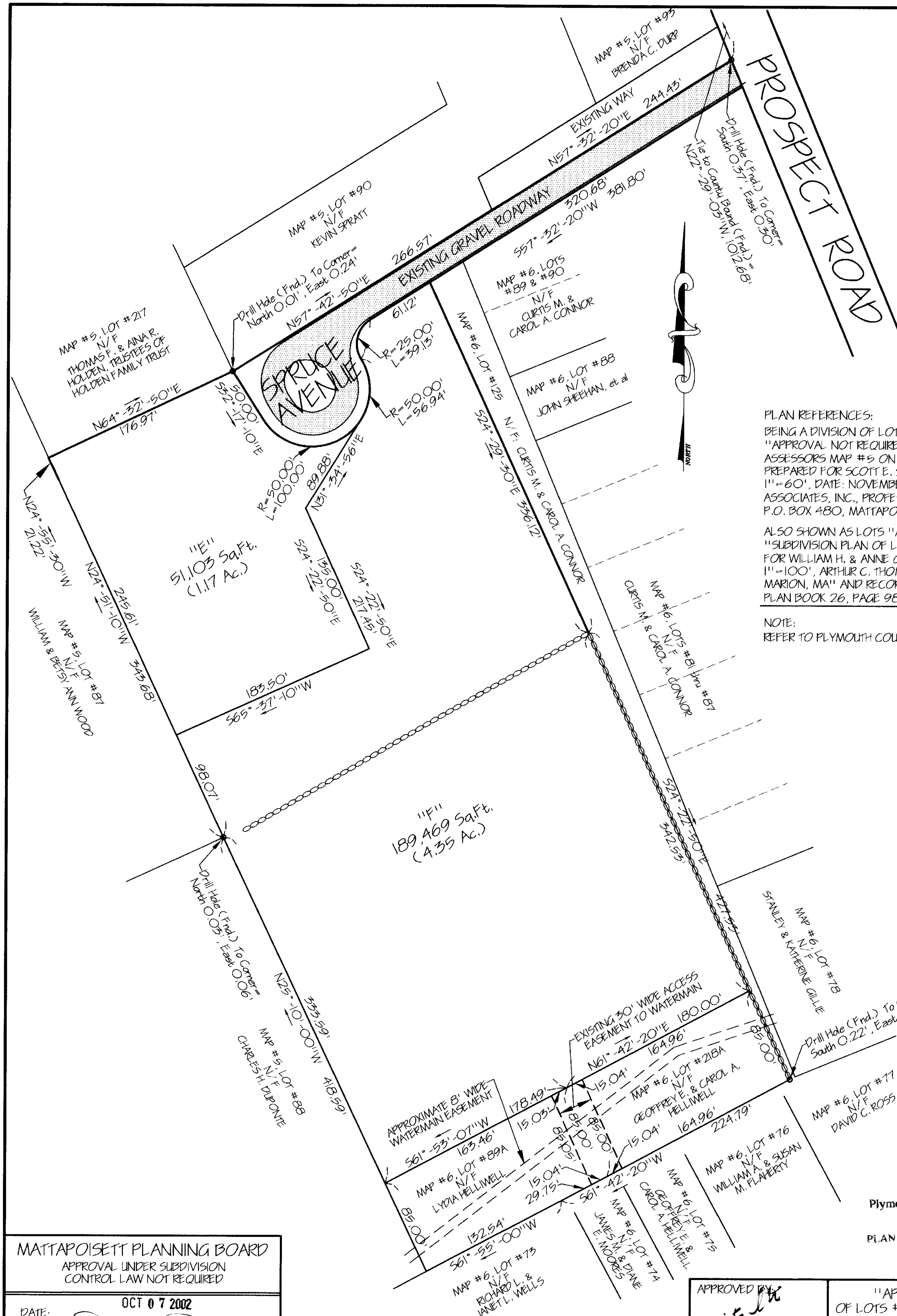
ALSO SHOWN AS LOTS "A" AND "B" ON A PLAN ENTITLED: "SUBDIVISION PLAN OF LAND IN MATTAPOISETT, MA. PREPARED FOR WILLIAM H. & ANNE GAUDREAU, DECEMBER 1, 1987, SCALE: 1"=100', ARTHUR C. THOMPSON, INC., ENGINEERS & SURVEYORS MARION, MA" AND RECORDED IN THE PLYMOUTH REGISTRY, SEE PLAN BOOK 26, PAGE 98 AND PLAN BOOK 89, PAGE 625

NOTE:

REFER TO PLYMOUTH COUNTY SUPERIOR COURT CASE #88-0889.

ASSESSORS MAP # 5
ASSESSORS LOTS # 89 and 218
ZONING DISTRICT: RR-30
MINIMUM FRONTAGE: 150.00 Ft.
MINIMUM AREA: 30,000 Sq. Ft.
BUILDING SETBACKS:
FRONT: 50' SIDE: 30'
REAR: 40'
OWNER OF LOT #89:
SCOTT E. SNOW
#27 NASHAWENA ROAD
MATTAPOISETT, MA. 02739
OWNER OF LOT #218:
ELIZABETH F. SNOW
#27 NASHAWENA ROAD
MATTAPOISETT, MA. 02739

Plymouth County Registry of Deeds
PLAN BOOK **46** PAGE **242**



MATTAPOISETT PLANNING BOARD
APPROVAL UNDER SUBDIVISION
CONTROL LAW NOT REQUIRED

DATE: OCT 07 2002

R. J. Ryan
Barry Ryan
Andrew M. Ryan
David M. Ryan
Ronald C. Ryan

"NO DETERMINATION AS TO COMPLIANCE WITH THE BY-LAW REQUIREMENTS HAS BEEN MADE OR IS INTENDED BY THE ABOVE ENDORSEMENT."

APPROVED BY Christopher Costa

COMMONWEALTH OF MASSACHUSETTS
REGISTERED PROFESSIONAL LAND SURVEYOR
No. 31305
10/07/02

"APPROVAL NOT REQUIRED PLAN"
OF LOTS #89 and #218 ON ASSESSORS MAP #5
ON SPRUCE AVENUE IN
MATTAPOISETT, MA.
PREPARED FOR
SCOTT E. SNOW
AND
ELIZABETH F. SNOW
SCALE: 1"=60' DATE: OCTOBER 4, 2002

N. DOUGLAS SCHNEIDER & ASSOCIATES, INC.
PROFESSIONAL CIVIL ENGINEERS
1 COUNTY RD., P.O. BOX 480, MATTAPOISETT, MA 02739
1-508-758-7866

Drawn By: D.M.D. Check By: N.D.S. Job No. 670

Along 39-
02-860