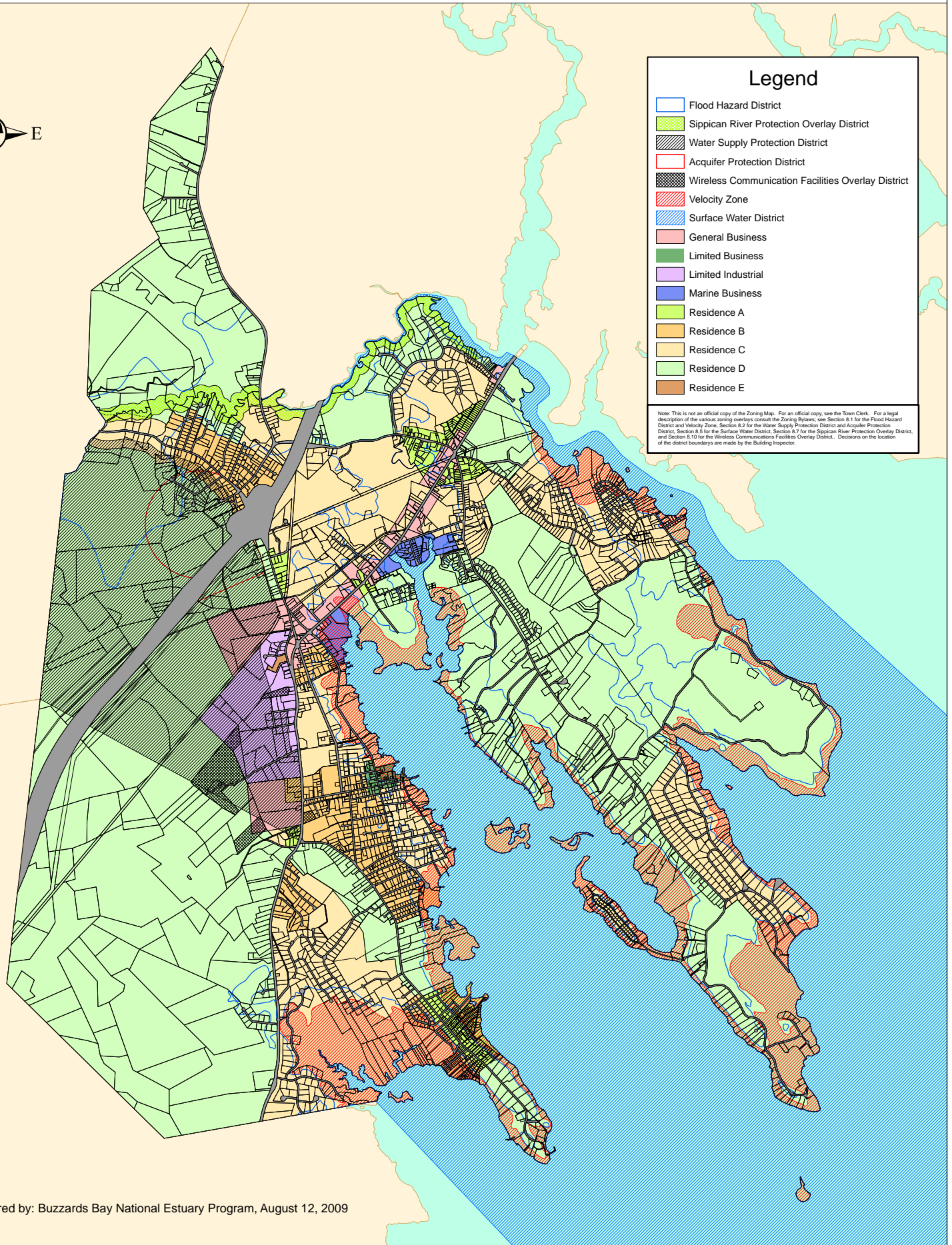
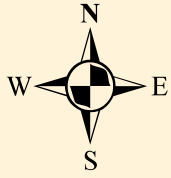


Town of Marion Zoning Districts 2009



Legend

- Flood Hazard District
- Sippican River Protection Overlay District
- Water Supply Protection District
- Acquirer Protection District
- Wireless Communication Facilities Overlay District
- Velocity Zone
- Surface Water District
- General Business
- Limited Business
- Limited Industrial
- Marine Business
- Residence A
- Residence B
- Residence C
- Residence D
- Residence E

Note: This is not an official copy of the Zoning Map. For an official copy, see the Town Clerk. For a legal description of the various zoning overlays consult the Zoning Bylaws: see Section 8.1.1 for the Flood Hazard District and Velocity Zone, Section 8.2 for the Water Supply Protection District and Acquirer Protection District, Section 8.5 for the Surface Water District, Section 8.7 for the Sippican River Protection Overlay District, and Section 8.10 for the Wireless Communications Facilities Overlay District. Decisions on the location of the district boundaries are made by the Building Inspector.

