



**BOUCHARD B120 RELEASE
SHORELINE SEGMENT SUMMARY**

5 Lan Drive, Suite 200
Westford, Massachusetts 01886
Tel. (978) 692-1114
Fax (978) 692-1115

GeoInsight Project Number 3871-002

SEGMENT IDENTIFICATION: **W1D-03**

SEGMENT NAME: **Holly Woods/ Hiller Cove**

SEGMENT LOCATION: **Mattapoisett, Massachusetts** (*Map attached*)

MAXIMUM DEGREE OF INITIAL OILING: Light (Oiling Score: 2.00)

SEGMENT INSPECTION STATUS: Passed IRAC criteria endpoints on 06/25/2003.

SITE-SPECIFIC INFORMATION

PHYSICAL CHARACTERISTICS:

Primary Shoreline Type/ Geology:

- 1C: Mixed sand and gravel (pebble to boulder) and rip rap groins (jetties).

Secondary Shoreline Type/ Geology:

- 1B: Less utilized semi-public and private sand beaches; and
- 1F: Salt marshes.

Hydrogeology:

- The segment is located within Hillers Cove, Aucoot Cove is located to the northeast, and Buzzards Bay to the southeast. The northern portion of the segment is wetlands and saltwater wetlands.

Bedrock Geology:

- The Bedrock underlying this segment is identified as undivided granite, gneiss, and schist (Zen, 1983).

ENVIRONMENTAL SENSITIVE RECEPTORS (Identified within 500 feet of segment):

Aquifer: None at segment.

Protected Open Space: At segment.

Public Ground Water Supply Wells: None at segment.

Public Surface Water Supply Wells: None at segment.

Areas of Critical Environmental Concern (ACEC): None at segment.

Vernal Pools: None at segment.

Priority Habitats of Rare Species: Adjacent to segment: Buzzards Bay aquatic environment.

Estimated Habitats of Rare Wildlife: Adjacent to segment: Buzzards Bay aquatic environment.

Floodplains: At segment: 100-year floodplain.

HUMAN SENSITIVE RECEPTORS (Identified within 500 feet of segment):

Segment Use: Based upon inspections conducted under Unified Command, the segment appears to be a private and semi-public area. Residential dwellings are located within 500 feet of the segment. Portions of segment appear to be accessible via roadway.

Frequency of Use: Presumed to be seasonal and year round residential use.

SUMMARY OF INSPECTION ACTIVITIES

WRF INSPECTIONS

(Wildlife Field Reconnaissance- Shoreline or On-Water Observations; Bird Transect Study.)

DATE	SUMMARY OF INFORMATION RECORDED BY INSPECTION TEAM
05/02/2003	Wildlife was not observed.
05/08/2003	A trace amount of oil was observed on beach areas. Thirty one birds (10 species) were observed. Dead or oiled birds were not observed.
05/10/2003	Wildlife was not observed.
05/13/2003	Trace oil observed on beach near the end of 3 rd Street. Wildlife was not observed.
05/17/2003	Beach investigation was conducted between N41°40.043' W70°45.520' and N41°39.688' W70°45.499'. Trace to moderate oiling observed on beach area. Wildlife was not observed.

NRDA FIELD ACTIVITIES SUMMARY

(Natural Resource Damage Assessment)

Note: Includes Shoreline Cleanup Assessment Team (SCAT) inspections and activities. SCAT forms were completed by field inspection teams working under the direction of Unified Command.

DATE	SUMMARY OF INFORMATION RECORDED BY INSPECTION TEAM
04/30/2003	Coat of oil (approximately 2 by 30 feet) observed. Non-B120 hardened tarballs also observed.
05/16/2003	Oil coated portions of jetties, seawalls, and riprap were observed between Joe's Point and Hiller Cove.
05/24/2003	Tarballs and surface oil-coated areas were observed, totaling less than 1% to 10% of the surface. One area of oil (approximately 9 by 15 feet) was observed in the middle intertidal zone. Cleanup activities were restricted to avoid damage to marsh habitat.

IRAC INSPECTIONS

(Unified Command Immediate Response Action Completion inspections and activities.)

DATE	SUMMARY OF INFORMATION RECORDED BY INSPECTION TEAM
06/15/2003	Sporadic oiling observed on groins between 26 and 48 Shore Drive. Tarballs and oiled wrack observed on beach near 38 Shore Drive. Segment did not meet IRAC criteria endpoints and further treatment was feasible.
06/25/2003	After additional cleanup activities, segment met IRAC criteria endpoints.

MCP FIELD ACTIVITIES SUMMARY

(Massachusetts Contingency Plan inspections and activities under the direction of the Licensed Site Professional-of-Record.)

MCP inspections pertaining to this segment were not conducted. GeoInsight did not receive IRA citizen calls pertaining to this segment.



W1D-03



0 250 500 1,000 Feet



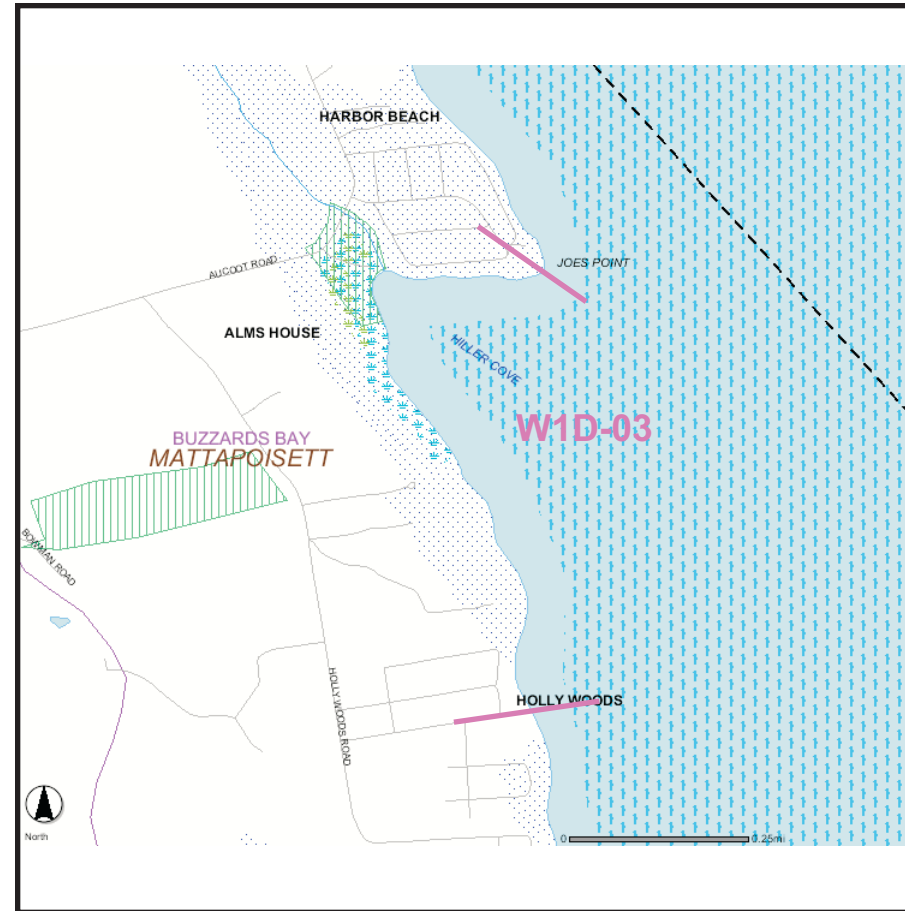
E N T R I X

W1D-03
Holly Woods/Hiller Cove
Bouchard B No. 120 Oil Spill
Buzzards Bay, MA

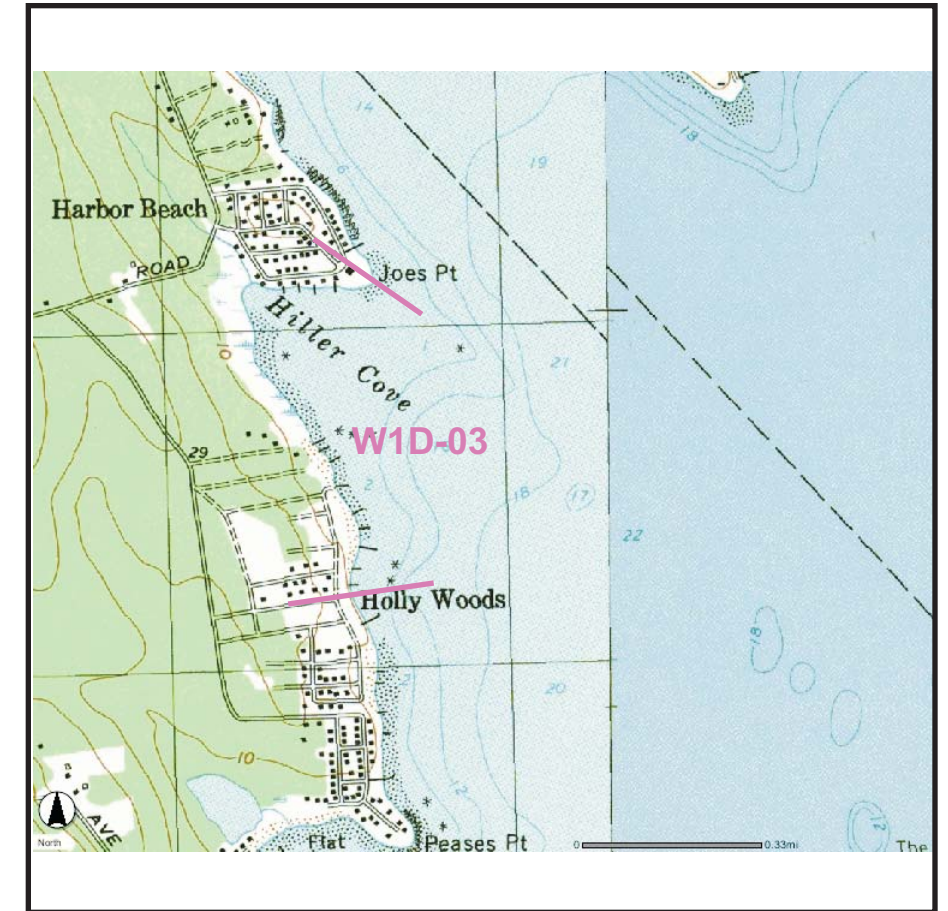
NATURAL HERITAGE AND ENDANGERED SPECIES MAP



2IE PRIORITY RESOURCE MAP



TOPOGRAPHIC MAP



LEGEND

NHESP 2005 MA PRIORITY HABITATS FOR STATE-PROTECTED RARE SPECIES

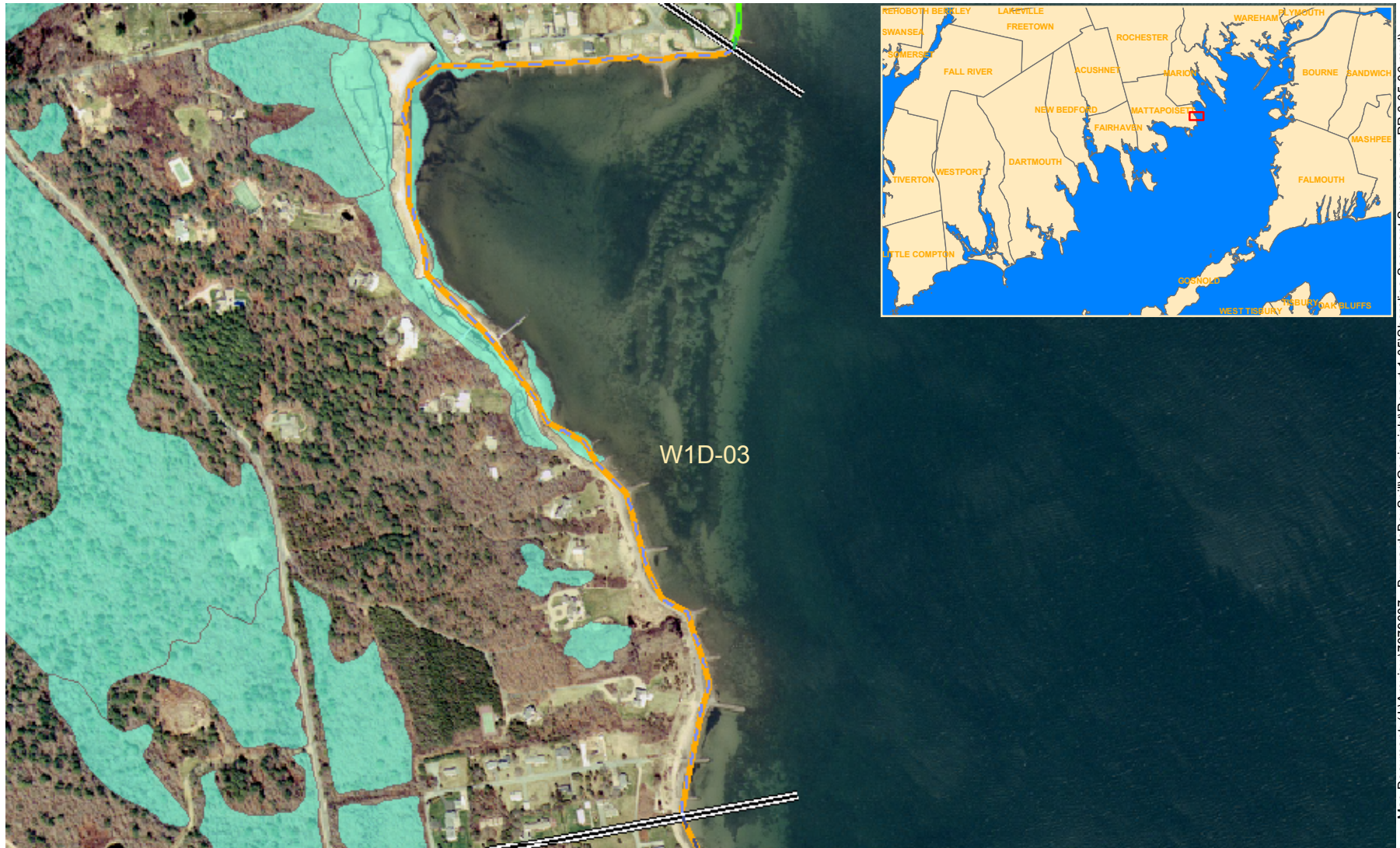
NHESP 2005 MA ESTIMATED HABITATS OF RARE WILDLIFE

DEP MCP 21e Map Legend

- Zone IIs
 - IWPA's
 - Zone A
 - Sole Source Aquifers
 - Solid Waste Sites
 - Protected Openspace
 - ACECs
 - NHESP Estimated Habitat of Rare Wildlife in Wetland Areas
 - Certified Vernal Pools 2003 NHESP
 - Subbasins
 - Mass Major Basins
 - DEP Region
 - Town Arcs
 - County Boundaries
- Aquifers, By Yield
 - HIGH YIELD
 - MEDIUM YIELD
 - Non Potential Drinking Water Source Area
 - HIGH YIELD
 - MEDIUM YIELD
 - FEMA Floodplains
 - 100 YEAR FLOODPLAIN
 - Hydrography
 - WATER
 - RESERVOIR
 - WETLANDS
 - SALT WATER WETLANDS
 - FLATS SHOALS
 - Rivers and Streams
 - PERENNIAL
 - INTERMITTENT
 - SHORELINE
 - MAN MADE SHORE
 - DAM
 - AQUEDUCT
 - EOT-OTP Roads
 - LIMITED ACCESS HIGHWAY
 - MULTILANE HWY. NOT LIMITED ACCESS
 - OTHER NUMBERED HWY
 - MAJOR ROAD - COLLECTOR
 - MINOR STREET OR ROAD, RAMP
 - Tracks and Trails MHD
 - TRACK
 - TRAIL
 - Transmission Lines
 - PIPELINE
 - POWERLINE
 - TRAIN



		PROJECT:		B120 OIL SPILL	
		LOCATION:		HOLLY WOODS / HILLER COVE BUZZARDS BAY, MA	
TITLE:					
PHASE II SUPPORTING MAPS					
DESIGNED:	DRAWN:	CHECKED:	APPROVED:	FIGURE #:	
LAC	JKB	KDT	MJW	WID-03	
SCALE:	DATE:	FILE:	PROJECT #:		
AS SHOWN	01/25/06	3871WID-03	3871-002		



Map Document: (J:\Arxiview\7079607 - BuzzardsBaySpill\Geoinsight\Report 1-05\Shoreline Segment Summary rev RR 6-06-06.mxd)

Trench Location

- 11/2004
- 10/2004
- 09/2004
- 08/2004
- 07/2004
- 06/2004
- 04/2004
- 03/2004
- 01/2004
- 12/2003
- 11/2003
- 10/2003
- 09/2003
- ✱ Nearshore Subtidal Sediment Sampling Location 2004
- ✱ Deep Subtidal Sediment Sampling Location 2004
- ✱ Subtidal Sediment Sampling Location 2003
- ▲ Qualitative Shellfish Surveys 2004
- ◆ Marsh Sampling Location 2004
- ◆ Marsh Core Sampling Location 2004
- Water Sampling Location 2004
- Water Sampling Location 2003
- ★ Intertidal Sediment Sampling Location 2003
- ★ Intertidal Sediment Sampling Location 2004

- ✱ Shellfish Sampling Location
- ▲ Chain Drag Location 2003
- ▲ Chain Drag Location 2004
- Lobster Pot Sampling Location 2003
- Absorbent Pad Sampling Location 2003
- Dive Sites
- Wetlands
- Nests
- Vernal Pool
- NHESP 2003 Priority Habitats for State-Protected Rare Species

OILING

- NO DATA
- CLEAN
- VERY LIGHT
- LIGHT
- MEDIUM
- HEAVY

IRAC ESI

- Public-Private Sand Beach (1A/1B)
- Mixed Sand and Gravel (1C)
- Marsh (1F)
- Rocky Shoreline (1E)
- Riprap, Groin, Jetty (1D)
- Visual Inspection of Marsh Area

0 250 500 Feet



E N T R I X

W1D-03
Holly Woods/Hiller Cove,
Mattapoissett
Comprehensive Activities
Bouchard B No. 120 Oil Spill
Buzzards Bay, MA