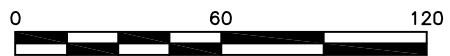


**LEGEND:**

- NO EVIDENCE OF OIL
- SHEEN ONLY
- 1 TO 5 PARTICLES OF OIL
- 6 TO 10 PARTICLES OF OIL
- 11 TO 20 PARTICLES OF OIL
- 21 TO 100 PARTICLES OF OIL
- GREATER THAN 100 PARTICLES OF OIL
- ◎ VERTICAL PROFILE LOCATION

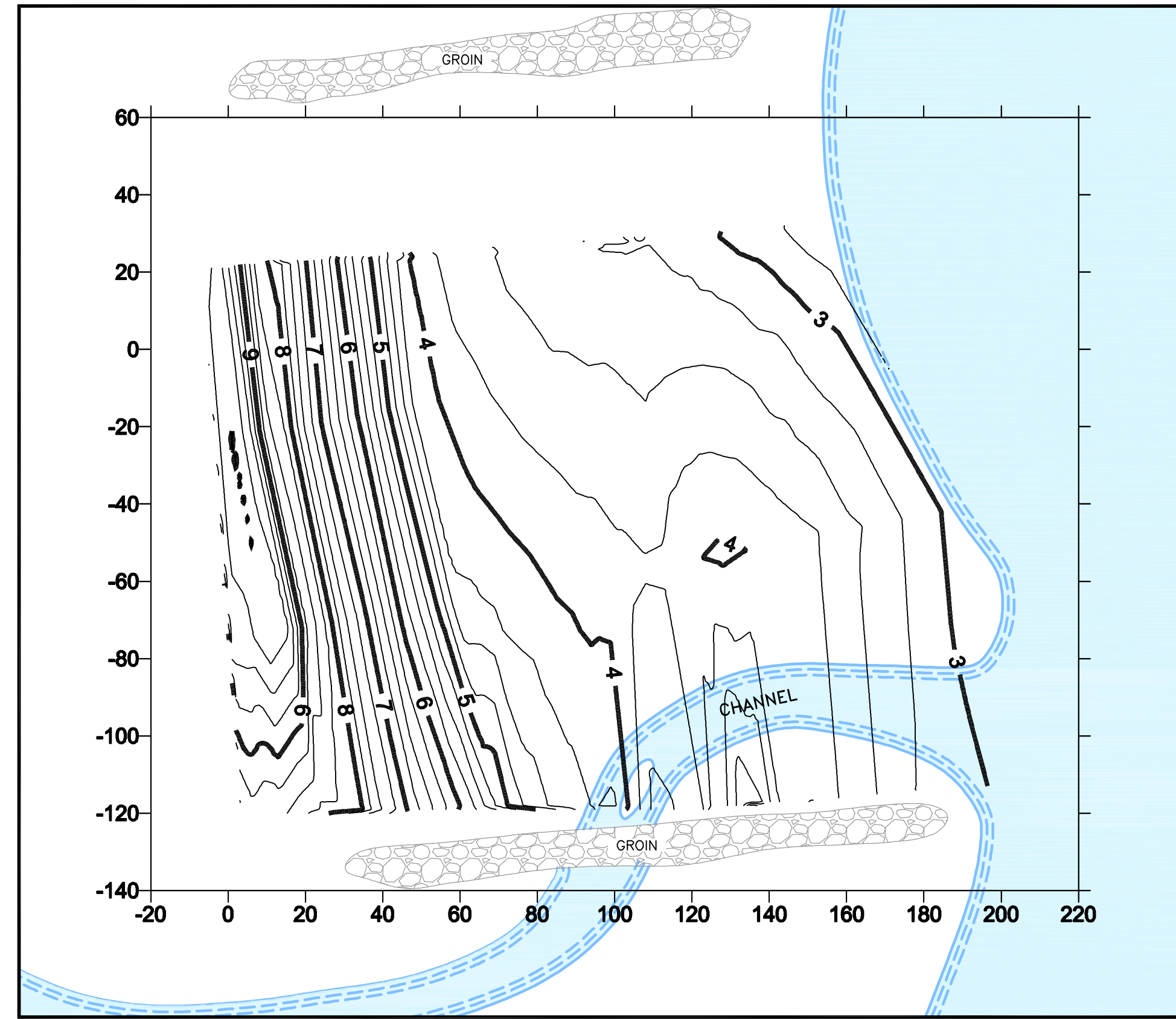
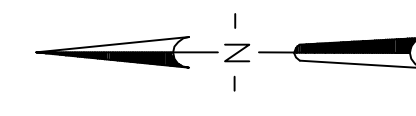


APPROX. SCALE IN FEET

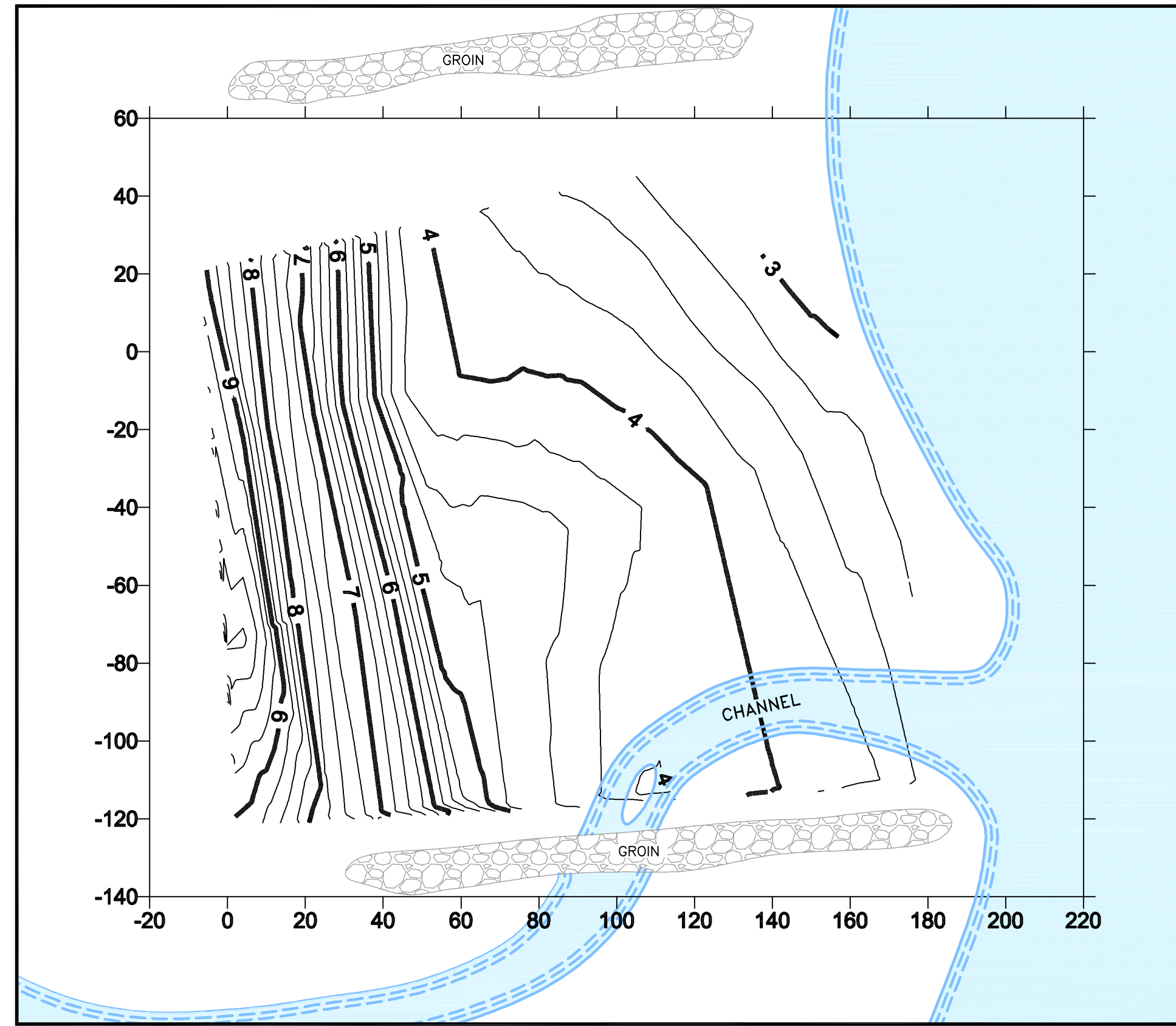
PROJECT: B120 OIL SPILL				
LOCATION: WIF-02 MATTAPOISETT, MASSACHUSETTS				
TITLE: SEPTEMBER 20, 2006 TEST PIT EVALUATION				
DESIGNED: RSE	DRAWN: NMT	CHECKED: KDT	APPROVED: KDT	FIGURE NO.: 2
SCALE: AS SHOWN	DATE: 1/16/07	FILE NO.: 3871D006	PROJECT NO.: 3871-002	



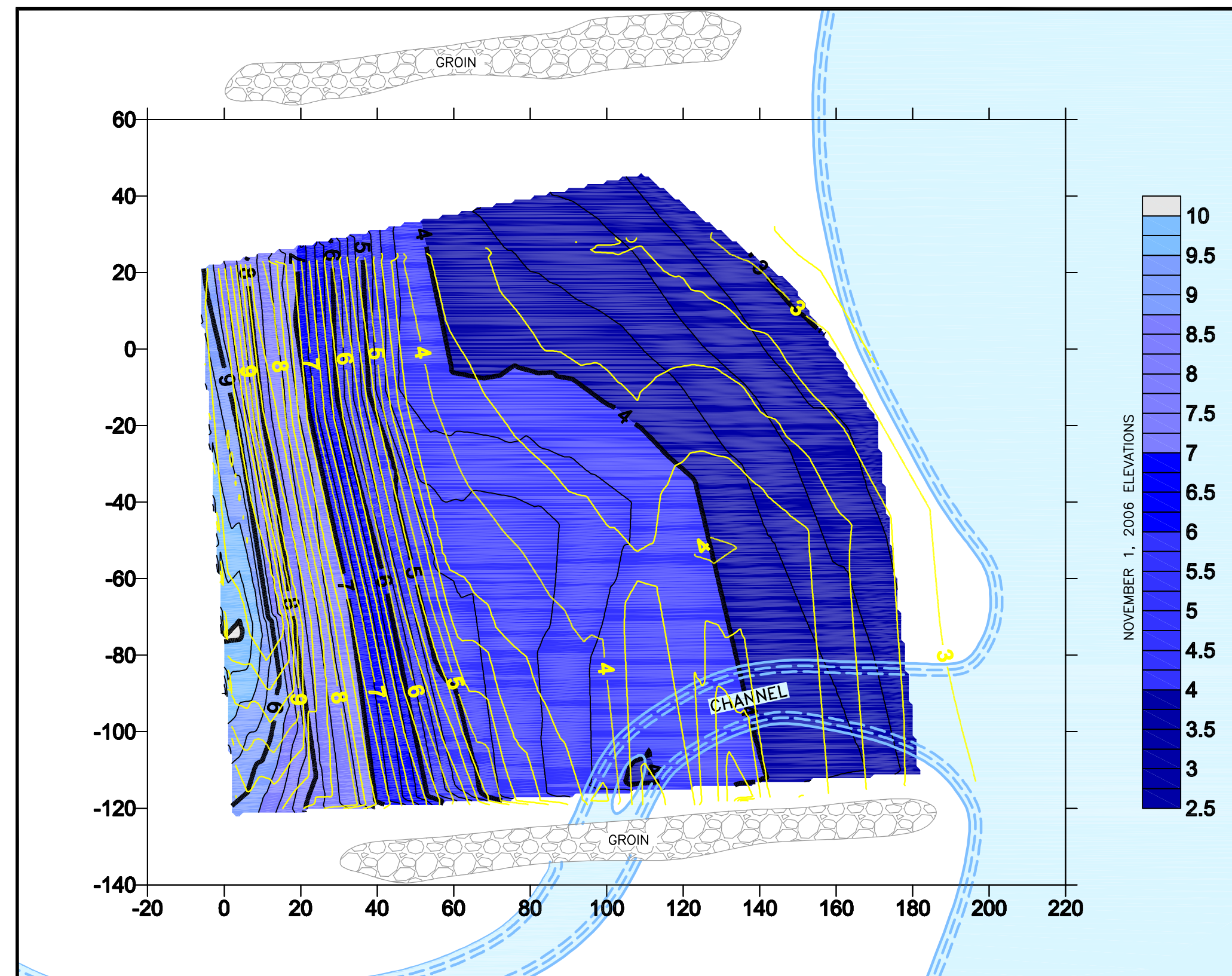




OCTOBER 18, 2005

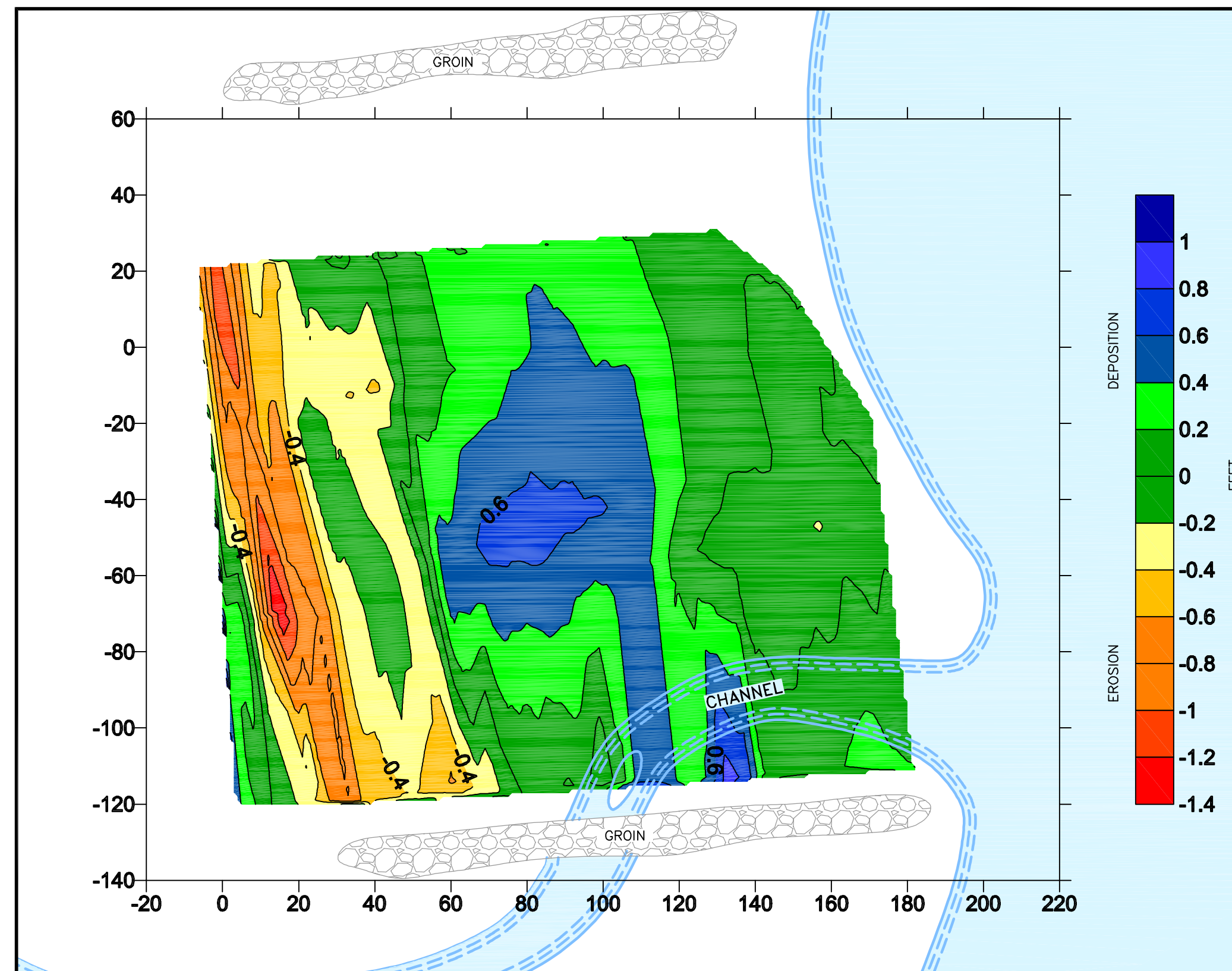


NOVEMBER 1, 2006



COMBINED PROFILE OVERLAY

— SHORELINE ELEVATIONS - OCTOBER 18, 2005  
 — SHORELINE ELEVATIONS - NOVEMBER 1, 2006

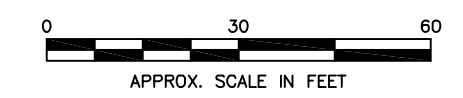


PROFILE DIFFERENCES

BETWEEN OCTOBER 18, 2005 AND NOVEMBER 1, 2006

**NOTES:**

1. ELEVATIONS IN FEET.
2. SHORELINE ELEVATIONS REFERENCED RELATIVE TO AN ARBITRARY 10.00 FOOT DATUM.
3. THE NOVEMBER 1, 2006 SHORELINE PROFILE WAS CONDUCTED AFTER OCTOBER 28/29, 2006 STORM EVENT.
4. SHORELINE AND CHANNEL LOCATIONS ARE APPROXIMATE.

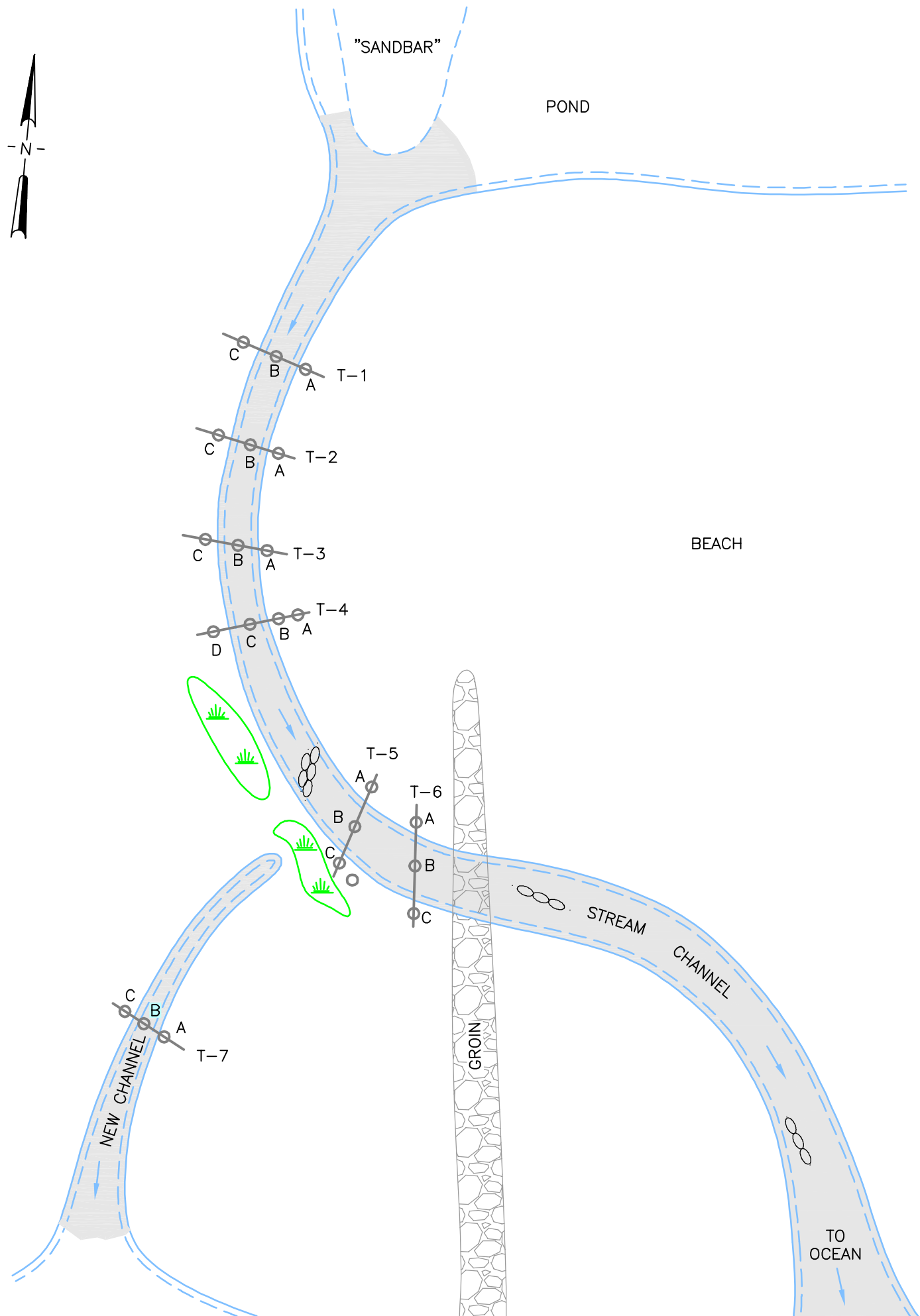
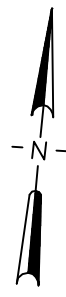


LOCATION: LEISURE SHORES MATTAPOISETT, MASSACHUSETTS			
PROJECT: B120 OIL SPILL BUZZARDS BAY, MASSACHUSETTS			
TITLE: SHORELINE PROFILES			
DESIGNED: KDT/RJ	DRAWN: NMT	CHECKED: KDT	APPROVED: KDT
SCALE: 1" = 30'	DATE: 2/20/07	FILE NO.: 3871D007	PROJECT NO.: 3871-002



FIGURE NO.: 4





**LEGEND:**

- B TEST PIT LOCATION
- 🌿 FRINGING MARSH
- AREA OF RAKING WITH SORBENT PADS

**NOTES:**

1. THIS FIGURE WAS BASED UPON OBSERVATIONS MADE BY GEOINSIGHT PERSONNEL.
2. LOCATIONS ARE APPROXIMATE.

PROJECT: B120 OIL SPILL			
LOCATION: WIF-02 MATTAPoisETT, MASSACHUSETTS			
TITLE: STREAM CHANNEL EVALUATION			
DESIGNED: KMZ	DRAWN: NMT	CHECKED: KDT	APPROVED: MJW
SCALE: NTS	DATE: 2/5/07	FILE NO.: 3871D008	PROJECT NO.: 3871-002



FIGURE NO.: 5