

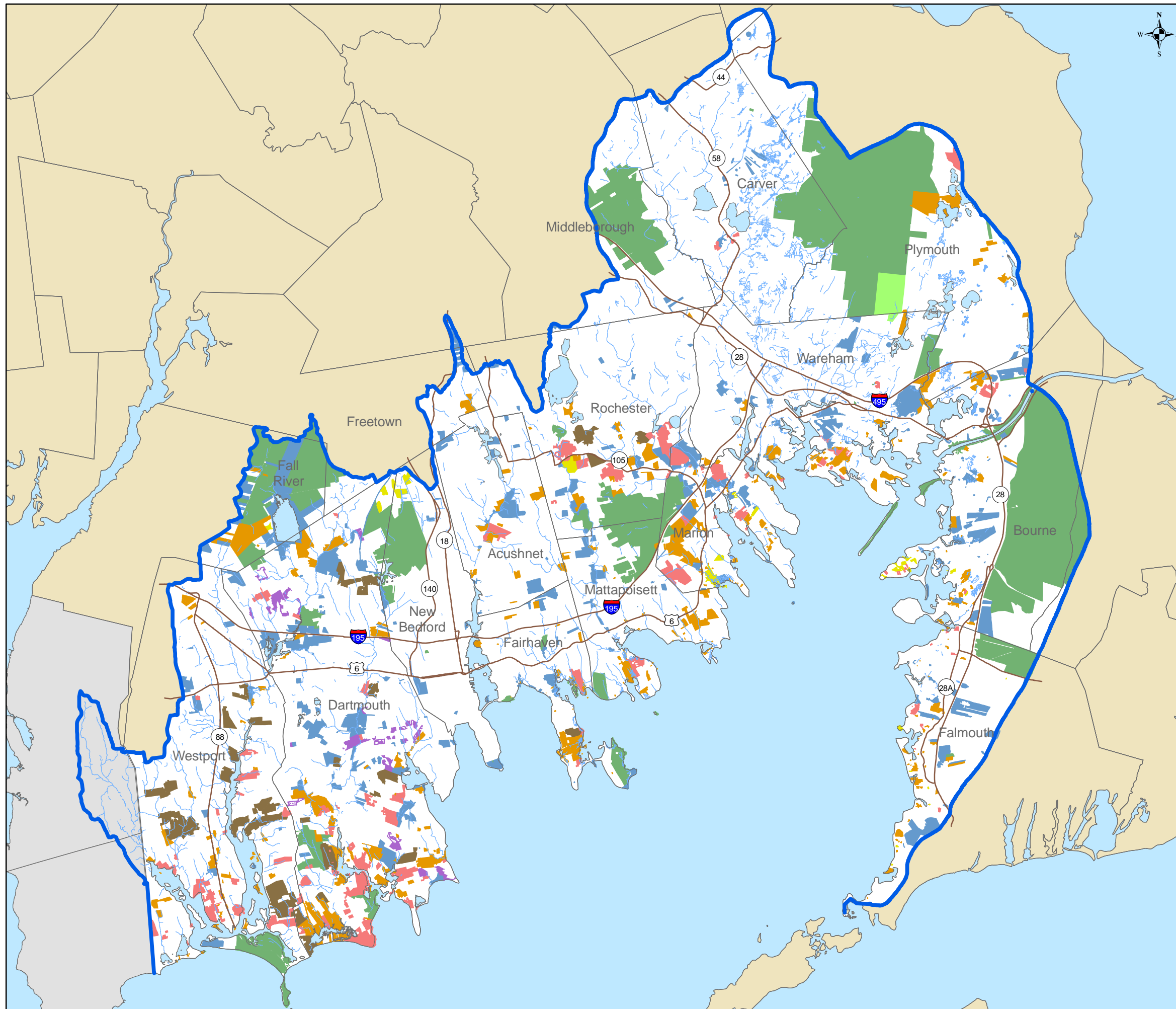
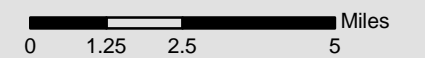
Existing Protected Lands October 2008

Legend

-  Buzzards Bay Watershed Boundary
-  Major Roads
-  Major Rivers/Streams
-  Waterbodies
-  Protected State & Federal Lands
-  State Conservation Restriction
-  Agricultural Preservation Restriction
-  Protected Municipal Lands
-  Municipal Conservation Restriction
-  Land Trust Properties
-  Land Trust Conservation Restriction
-  Other Deed Restrictions







Data Sources: MassGIS and Buzzards Bay NEP.

This map is for regional planning purposes only and should not be used for survey, engineering, legal, or regulatory purposes or for parcel-level analysis.



Statewide Land Conservation Plan

Legend

-  Buzzards Bay Watershed Boundary
-  Major Roads
-  Streams
-  Statewide Land Conservation Plan
-  Developed Areas (1999 Land Use data)
-  Waterbodies

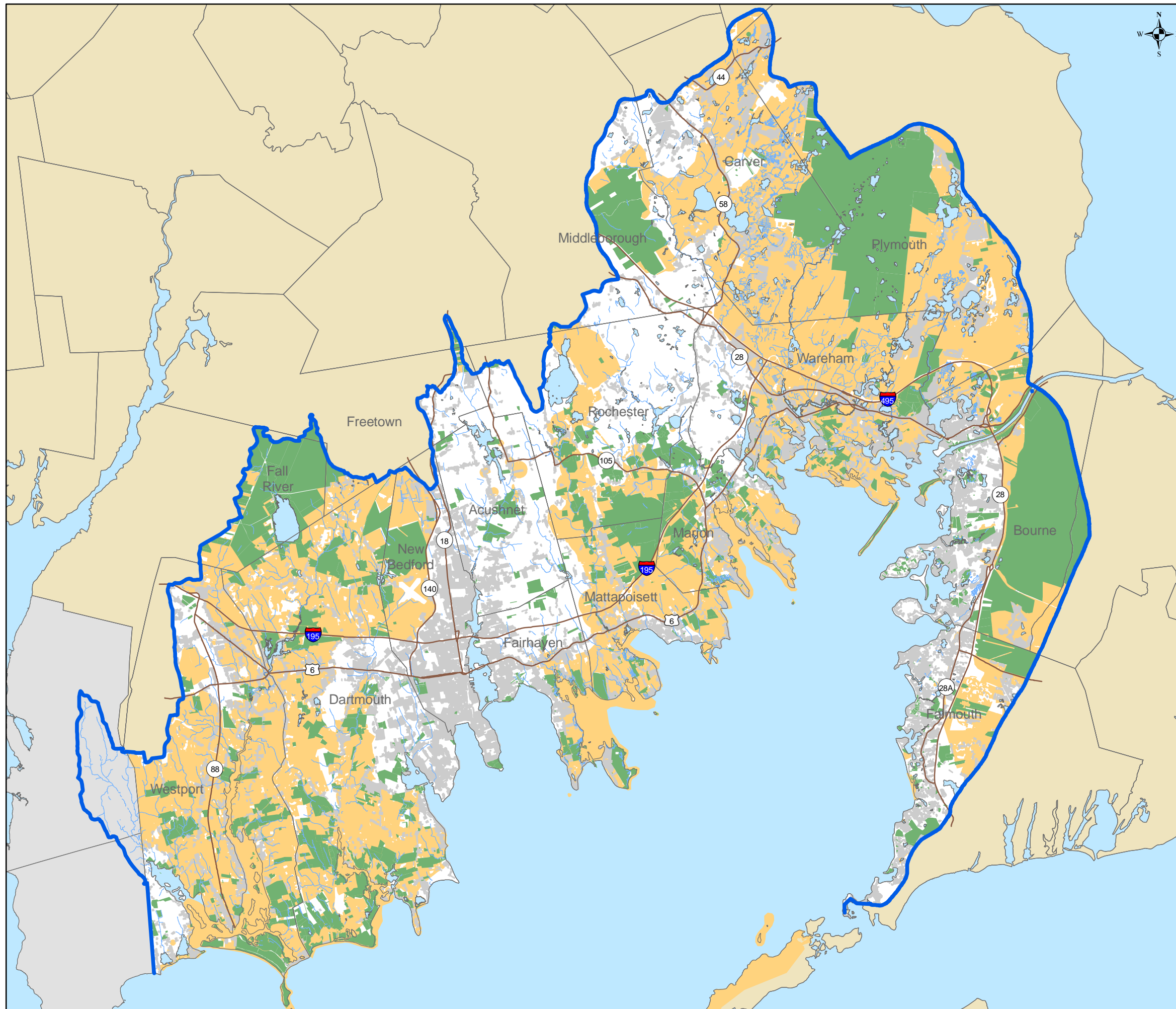
Data Source: MassGIS.

This map is for regional planning purposes only and should not be used for survey, engineering, legal, or regulatory purposes or for parcel-level analysis.

0 1 2 4 Miles



Map prepared by:
Buzzards Bay National Estuary Program
2870 Cranberry Hwy, E Wareham, MA 02538
October 2008



NHESP BioMap: Core Habitat & Supporting Natural Landscape

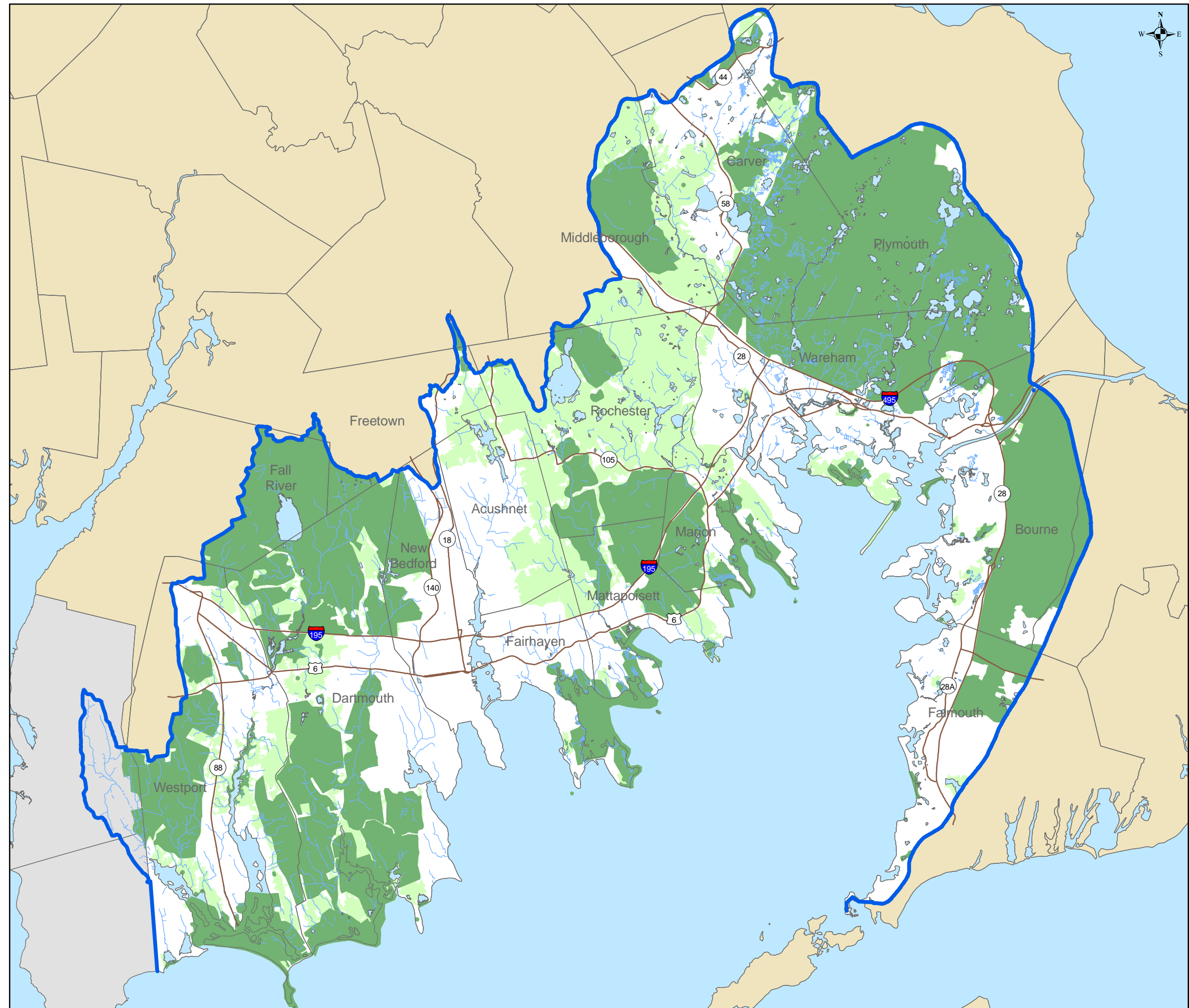
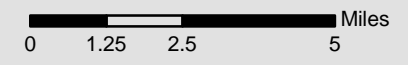
Legend

-  Buzzards Bay Watershed Boundary
-  Major Roads
-  Major Rivers/Streams
-  NHESP: BioMap Supporting Natural Landscape
-  NHESP: BioMap Core Habitat
-  Waterbodies

Data Source: MassGIS.


Note: NHESP stands for Natural Heritage and Endangered Species Program, an office of the Massachusetts Division of Fisheries and Wildlife.

This map is for regional planning purposes only and should not be used for survey, engineering, legal, or regulatory purposes or for parcel-level analysis.



NHESP Living Waters: Core Habitat & Critical Supporting Watersheds

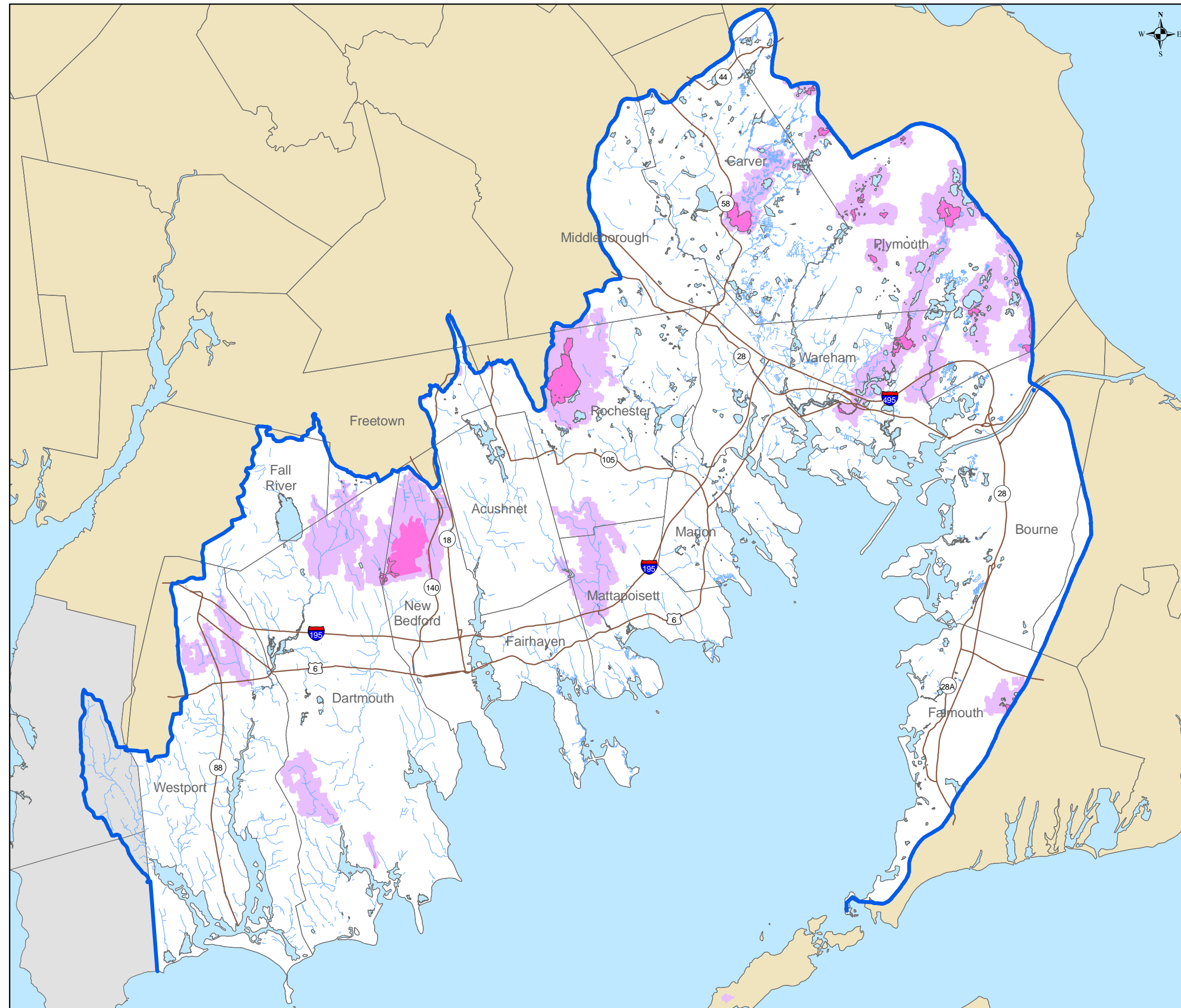
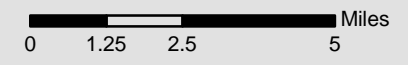
Legend

-  Buzzards Bay Watershed Boundary
-  Major Roads
-  Major Rivers/Streams
-  Waterbodies
-  NHESP Living Waters Critical Supporting Watersheds
-  NHESP Living Waters Core Habitat

Data Source: MassGIS.






Note: NHESP stands for Natural Heritage and Endangered Species Program, an office of the Massachusetts Division of Fisheries and Wildlife.

This map is for regional planning purposes only and should not be used for survey, engineering, legal, or regulatory purposes or for parcel-level analysis.



NHESP Priority Habitats for Rare Species

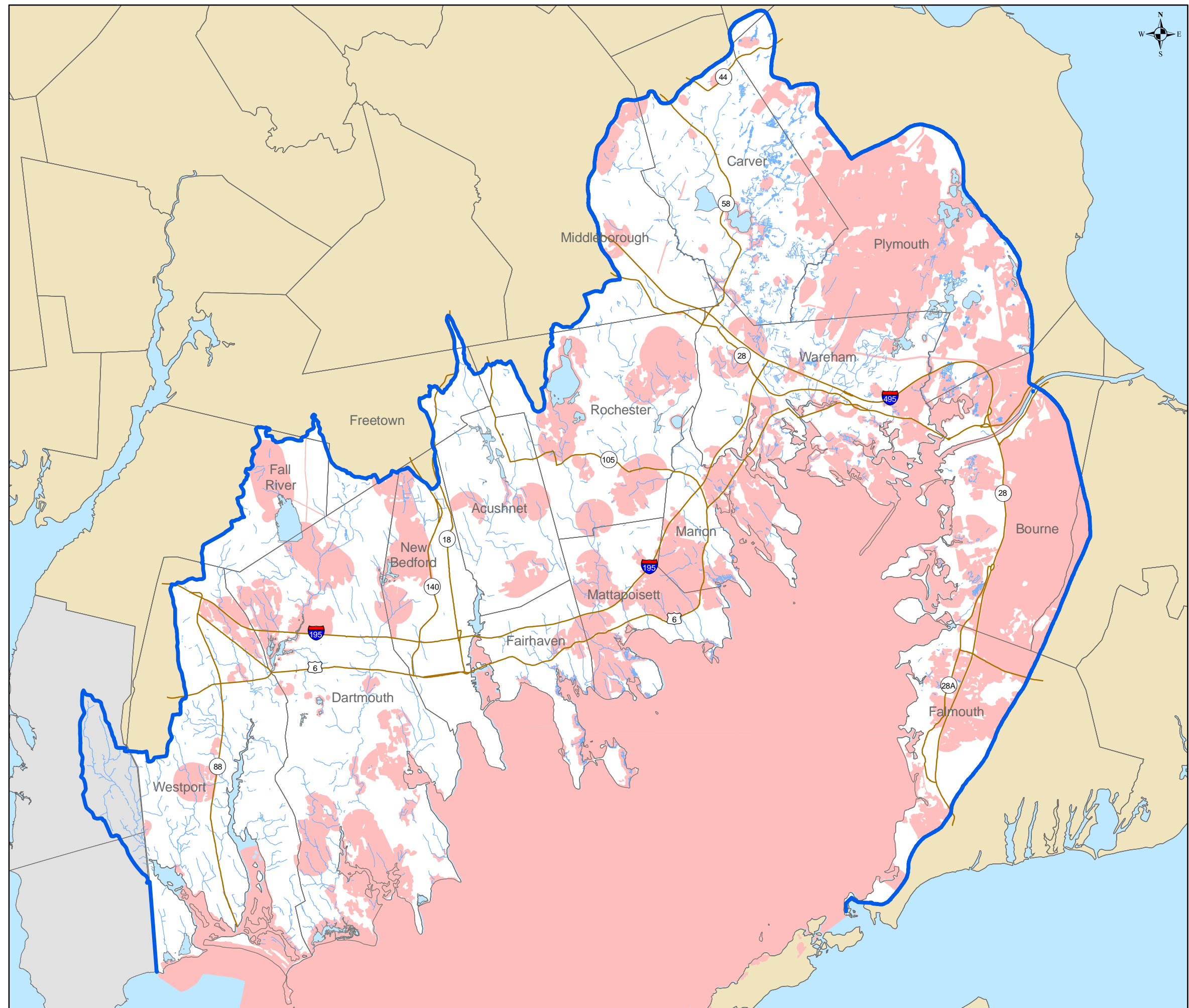
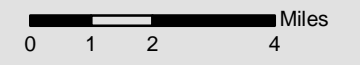
Legend

-  Buzzards Bay Watershed Boundary
-  Major Roads
-  Major Rivers/Streams
-  Waterbodies
-  NHESP Priority Habitats for Rare Species

Data Sources: MassGIS.

NHESP stands for The Natural Heritage and Endangered Species Program.

This map is for regional planning purposes only and should not be used for survey, engineering, legal, or regulatory purposes or for parcel-level analysis.



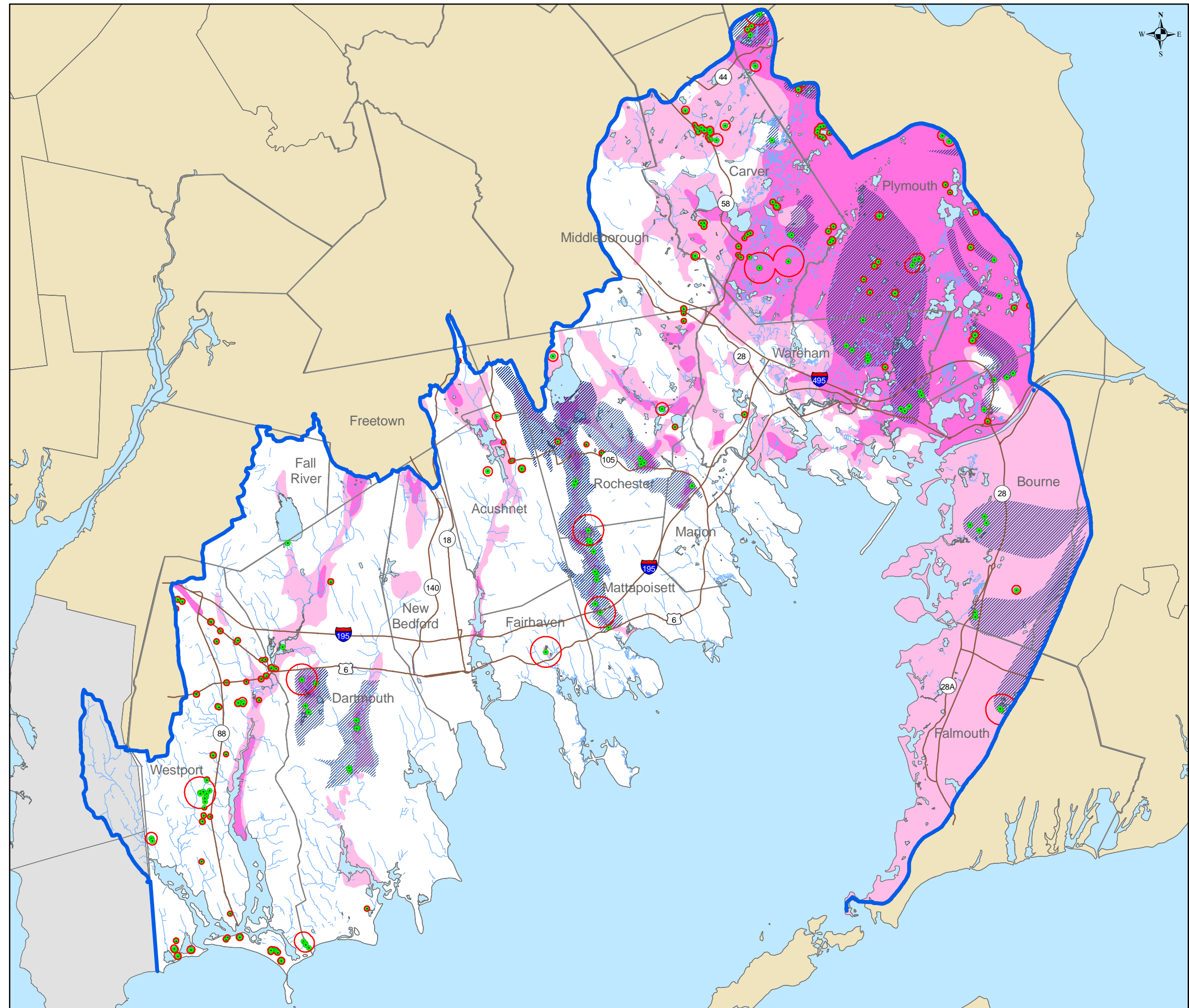
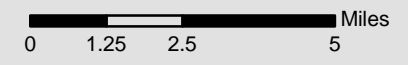
Surface and Ground Water Resources

Legend

-  Buzzards Bay Watershed Boundary
 -  Major Roads
 -  Major Rivers/Streams
 -  Interim Wellhead Protection Areas
 -  Public Water Supply Wells
 -  DEP Zone II
 -  Waterbodies
- Aquifer Yields**
-  Medium (100-300 gallons/minute)
 -  High (>300 gallons/minute)

Data Source: MassGIS.

This map is for regional planning purposes only and should not be used for survey, engineering, legal, or regulatory purposes or for parcel-level analysis.



Riparian and Shoreline Buffers

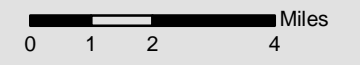
Legend

-  Buzzards Bay Watershed Boundary
-  Major Roads
-  Major Rivers/Streams
-  Waterbodies
-  1000-foot Riparian/Shoreline Buffer

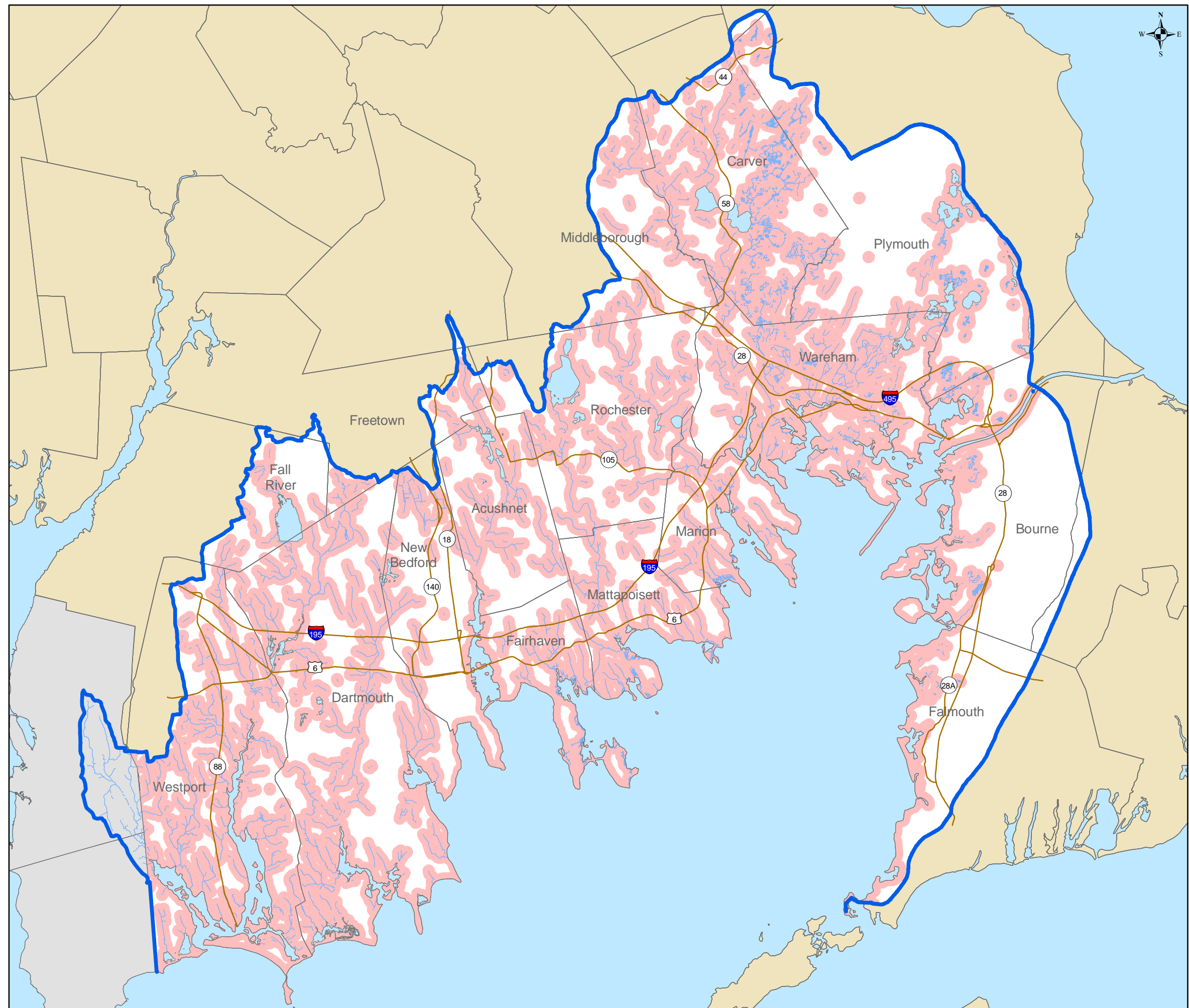
Data Sources: MassGIS.

Note: The 1000-foot Riparian/Shoreline Buffer data set was created using the ArcGIS buffering tool and MassGIS' 1:25,000 coastline and Major Ponds/Streams coverages.

This map is for regional planning purposes only and should not be used for survey, engineering, legal, or regulatory purposes or for parcel-level analysis.






Map prepared by:
Buzzards Bay National Estuary Program
2870 Cranberry Hwy, E Wareham, MA 02538
October 2008









NHESP Natural Communities, 2006 edition

Legend

-  Buzzards Bay Watershed Boundary
-  Major Roads
-  Major Rivers/Streams

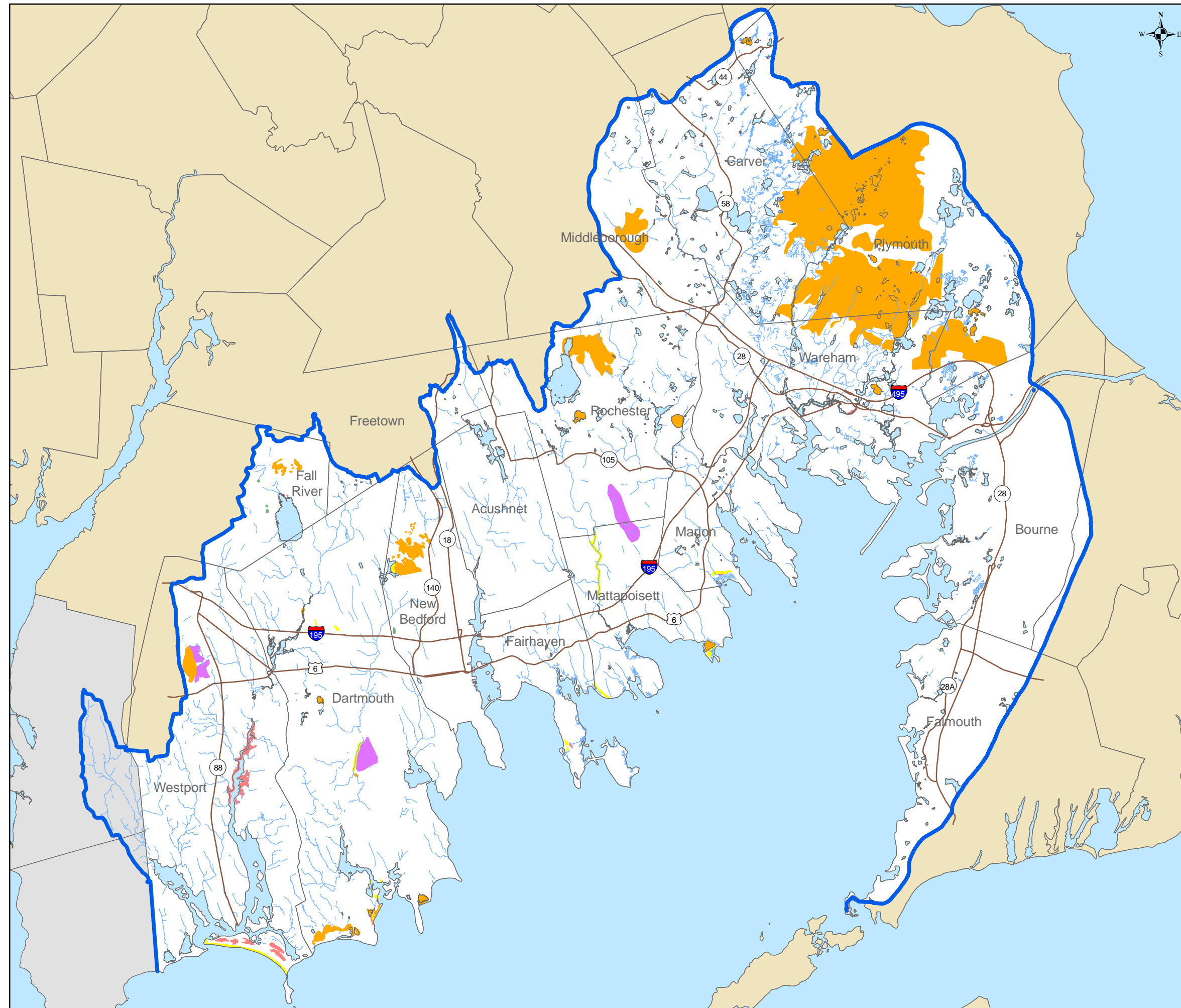
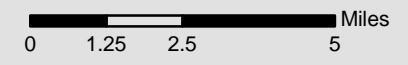
NHESP Natural Communities - State Rank

-  S1 - Typically 5 or fewer occurrences
-  S2 - Typically 6 - 20 occurrences
-  S3 - Typically 21-100 occurrences
-  S4 - Apparently secure in Massachusetts
-  S5 - Demonstrably secure in Massachusetts
-  Waterbodies

Data Source: MassGIS.









Note: NHESP stands for Natural Heritage and Endangered Species Program, an office of the Massachusetts Division of Fisheries and Wildlife.

This map is for regional planning purposes only and should not be used for survey, engineering, legal, or regulatory purposes or for parcel-level analysis.



Unique Environments

Legend

-  Buzzards Bay Watershed Boundary
-  Major Roads
-  Major Rivers/Streams
-  NHESP Certified Vernal Pools
-  NHESP Potential Vernal Pools
-  Coastal Plain Ponds
-  Waterbodies
-  Pine Barrens

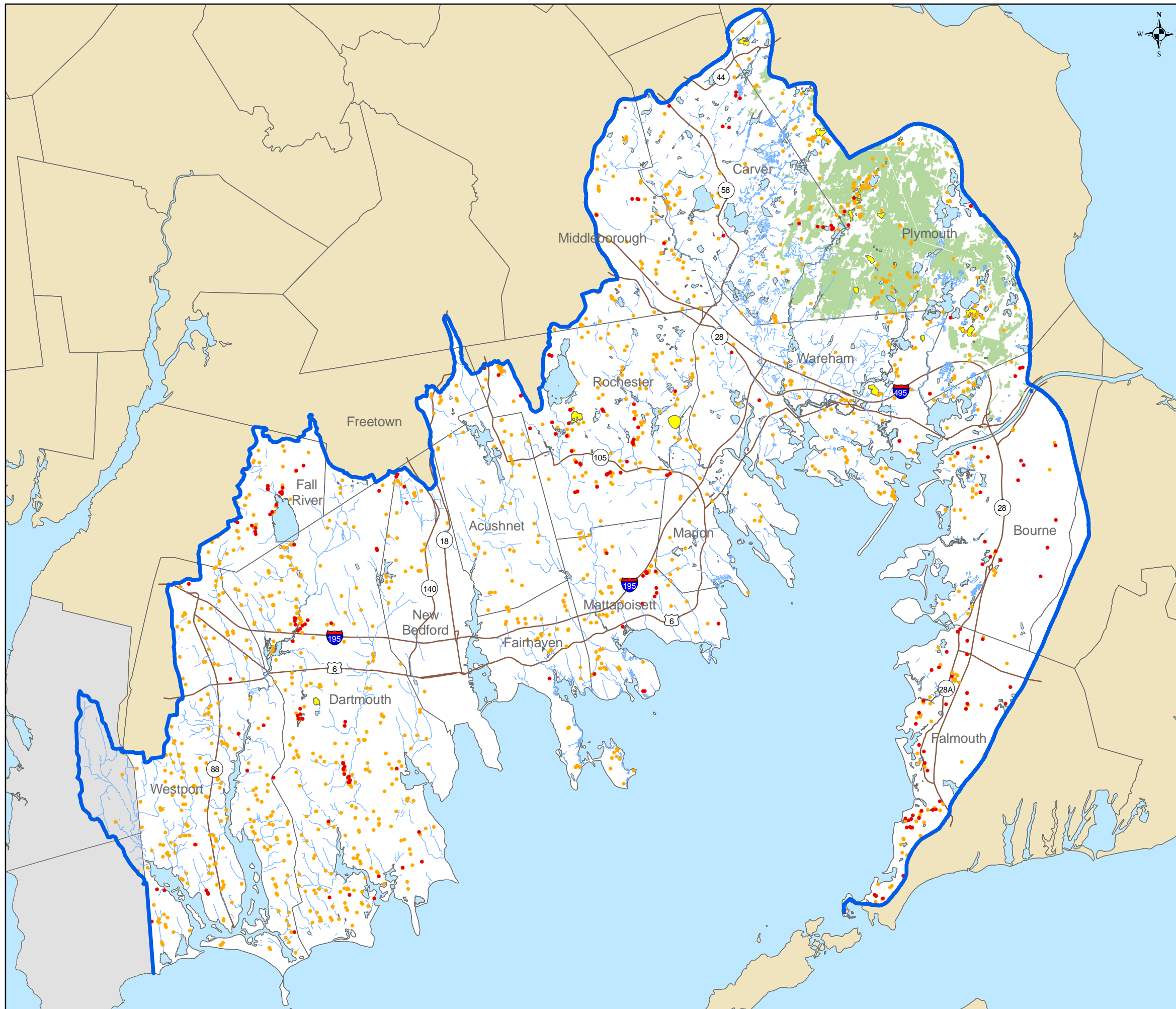
Data Source: MassGIS.

Note: Pine barren systems are a mosaic of pitch pine and scrub oak, with heath and grassy openings, located on nutrient-poor, acidic, drought-prone soils. The data shown was modified by MassGIS from a selected subset of data originally created by UMass Amherst.

NHESP Potential Vernal Pools are NOT equivalent to NHESP Certified Vernal Pools.









This map is for regional planning purposes only and should not be used for survey, engineering, legal, or regulatory purposes or for parcel-level analysis.

0 1 2 4 Miles



DEP Estimated Core Wetland Resources

Legend

-  Buzzards Bay Watershed Boundary
-  Major Roads
-  Major Rivers/Streams
-  Waterbodies
-  Cranberry Bogs
-  Salt Marsh
-  DEP Core Wetland Resources
-  Developed Areas (1999 Land Use)

Data Source: MassGIS.

This map is for regional planning purposes only and should not be used for survey, engineering, legal, or regulatory purposes or for parcel-level analysis.

